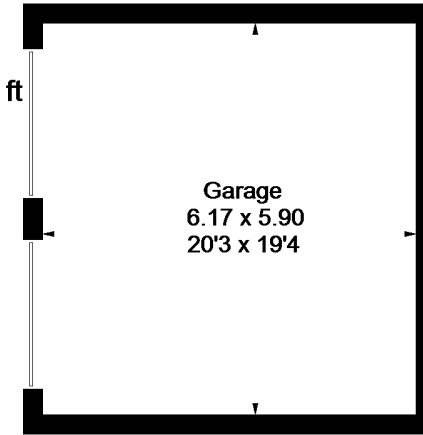
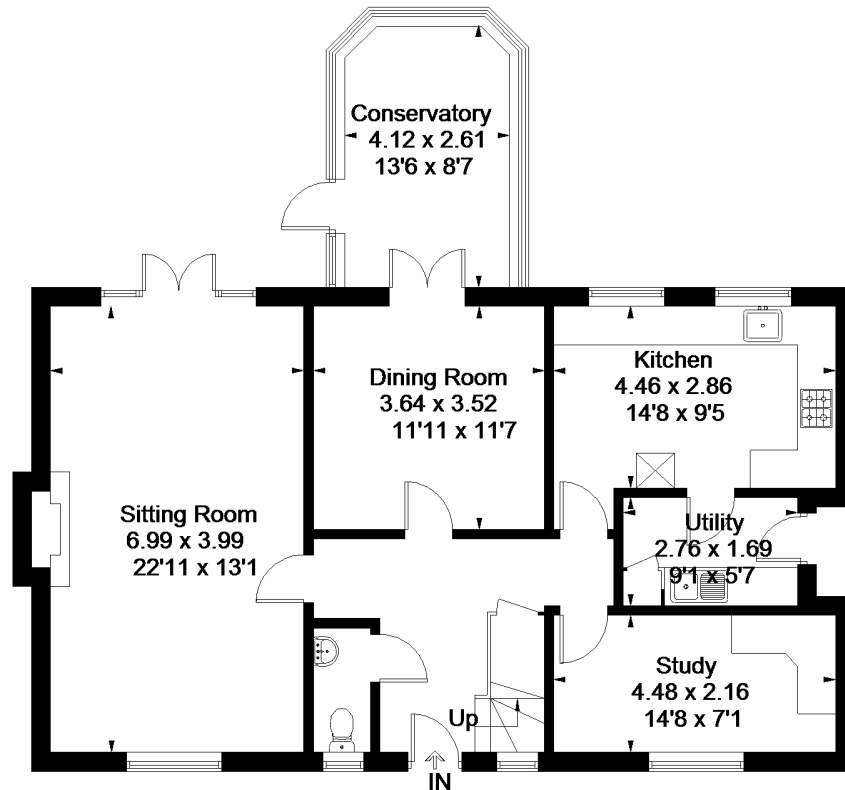




Approximate Floor Area = 186.3 sq m / 2005 sq ft  
 Garage = 36.4 sq m / 392 sq ft  
 Total = 222.7 sq m / 2397 sq ft  
 Including Limited Use Area (1.4 sq m / 15 sq ft)

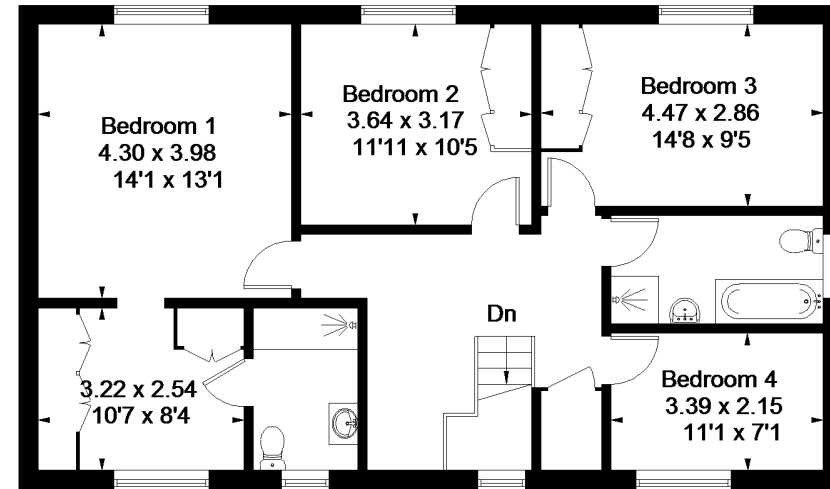


(Not Shown In Actual Location / Orientation)



**Ground Floor**

Area = 97.9 sq m / 1054 sq ft  
 (Limited Use Area = 1.6 sq m / 17 sq ft)



**First Floor**

Area = 86.8 sq m / 934 sq ft