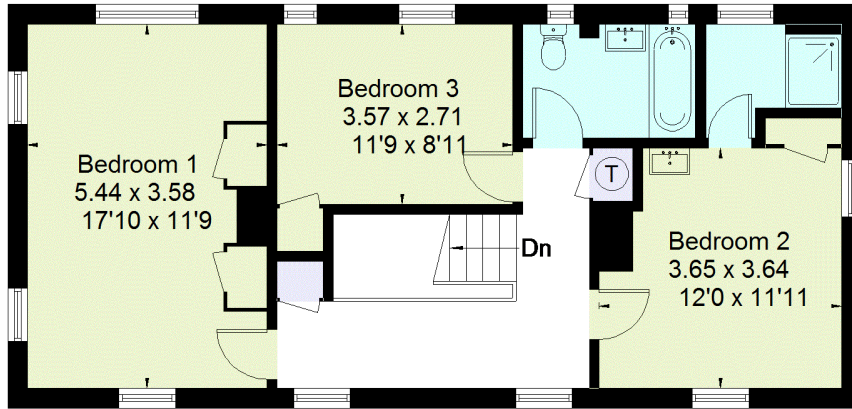
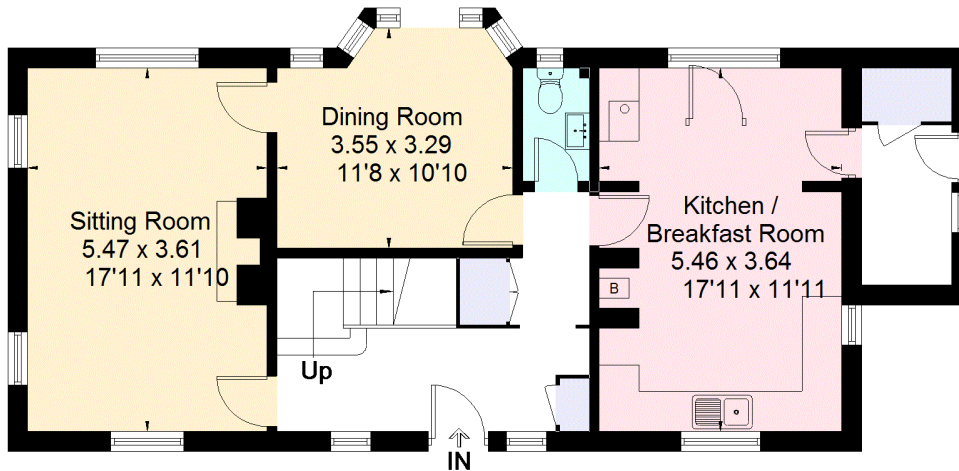


Approximate Area = 141.7 sq m / 1525 sq ft  
Garage = 13 sq m / 140 sq ft  
Total = 154.7 sq m / 1665 sq ft  
Including Limited Use Area (1.4 sq m / 14 sq ft)



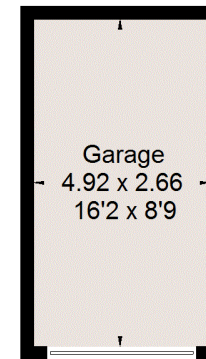
### First Floor

Area = 67.4 sq m / 725 sq ft  
(Limited Use Area = 0.7 sq m / 7 sq ft)



### Ground Floor

Area = 74.3 sq m / 800 sq ft  
(Limited Use Area = 0.7 sq m / 7 sq ft)



(Not Shown In Actual Location / Orientation)