

# Micheldever, Winchester

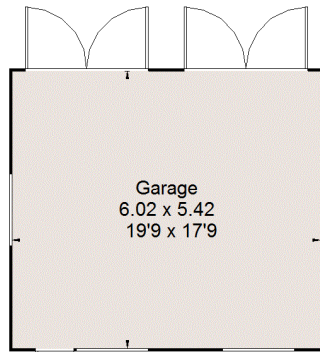
Approximate Gross Internal Area = 183.5 sq m / 1975 sq ft

Studio = 15.1 sq m / 162 sq ft

Summer House = 13.2 sq m / 142 sq ft

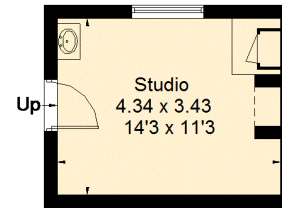
Garage = 32.6 sq m / 351 sq ft

Total = 244.4 sq m / 2630 sq ft

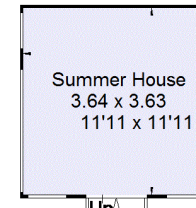


(Not Shown In Actual Location / Orientation)

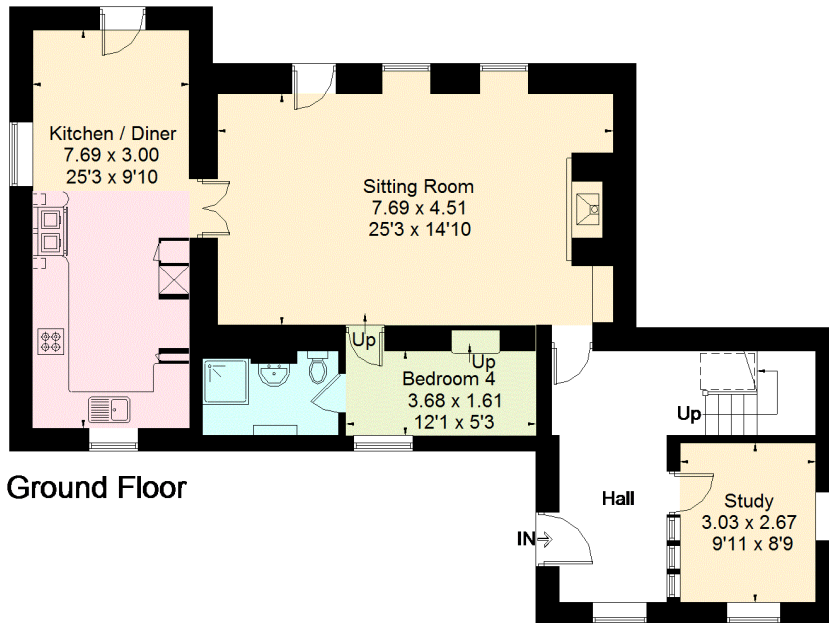
= Reduced headroom below 1.5m / 5'0



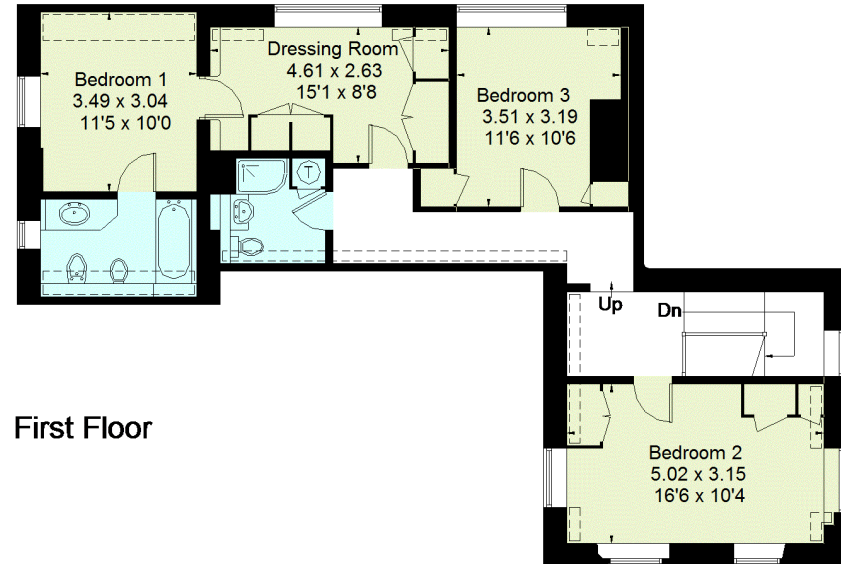
(Not Shown In Actual Location / Orientation)



(Not Shown In Actual Location / Orientation)



Ground Floor



First Floor

FLOORPLANZ © 2019 0203 9056099 Ref: 224588

This plan is for layout guidance only. Drawn in accordance with RICS guidelines. Not drawn to scale unless stated. Windows & door openings are approximate. Whilst every care is taken in the preparation of this plan, please check all dimensions, shapes & compass bearings before making any decisions reliant upon them.