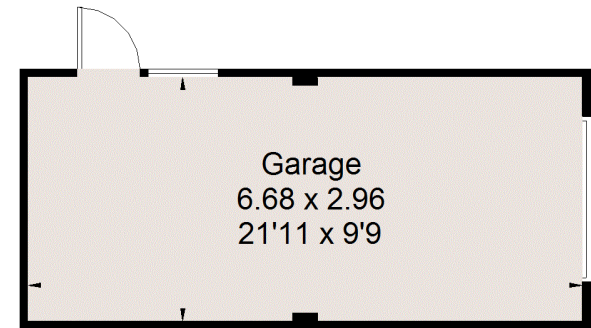
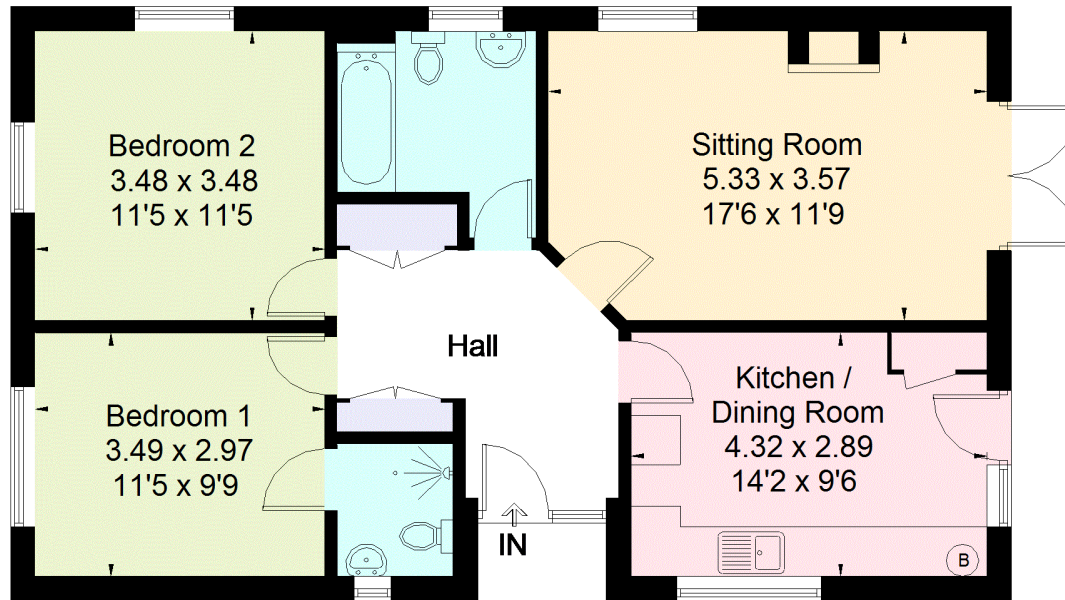


Drove Road, Chilbolton, Stockbridge

Approximate Gross Internal Area = 74.5 sq m / 802 sq ft
Garage = 19.8 sq m / 213 sq ft
Total = 94.3 sq m / 1015 sq ft



(Not Shown In Actual Location / Orientation)

FLOORPLANZ © 2018 0203 9056099 Ref: 215092

This plan is for layout guidance only. Drawn in accordance with RICS guidelines. Not drawn to scale unless stated. Windows & door openings are approximate. Whilst every care is taken in the preparation of this plan, please check all dimensions, shapes & compass bearings before making any decisions reliant upon them.