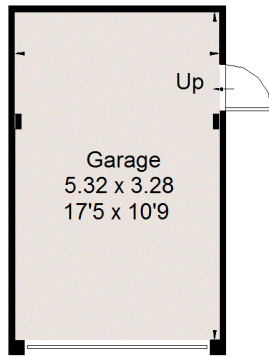


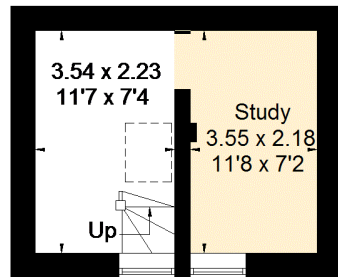
# Main Road, Hursley, Winchester

Approximate Gross Internal Area = 168.9 sq m / 1818 sq ft  
Garage = 17.5 sq m / 188 sq ft  
Total = 186.4 sq m / 2006 sq ft

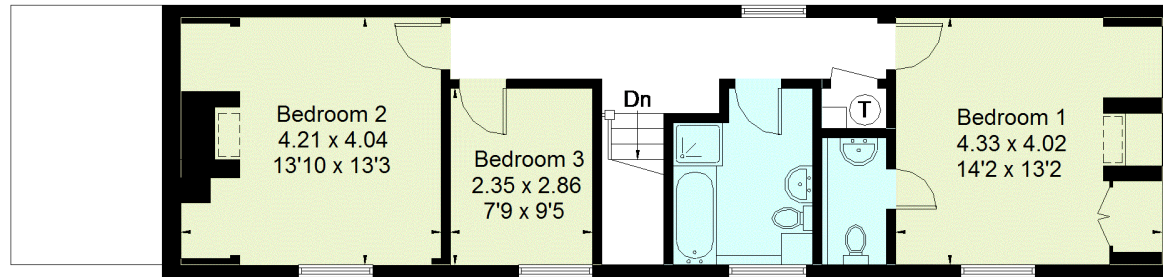


(Not Shown In Actual Location / Orientation)

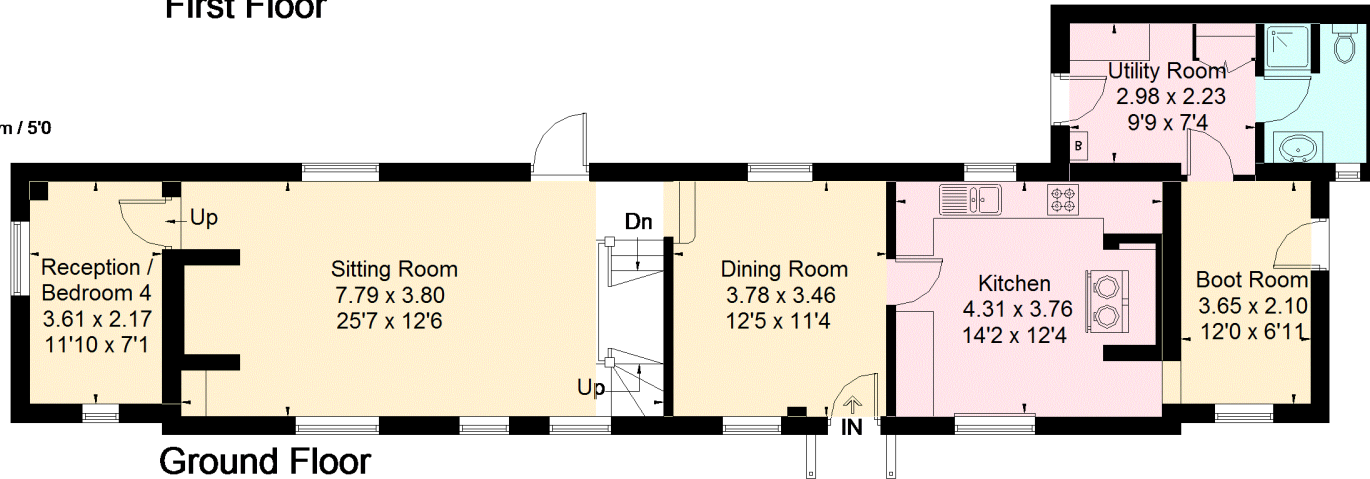
= Reduced headroom below 1.5m / 5'0"



Lower Ground Floor



First Floor



Ground Floor

FLOORPLANZ © 2018 0203 9056099 Ref: 202205

This plan is for layout guidance only. Drawn in accordance with RICS guidelines. Not drawn to scale unless stated. Windows & door openings are approximate. Whilst every care is taken in the preparation of this plan, please check all dimensions, shapes & compass bearings before making any decisions reliant upon them.