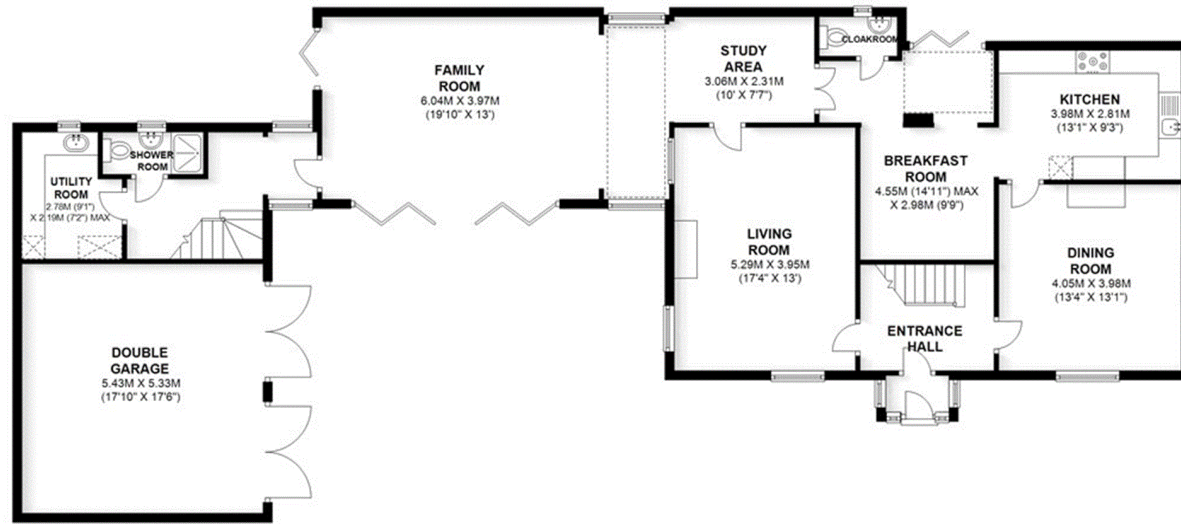
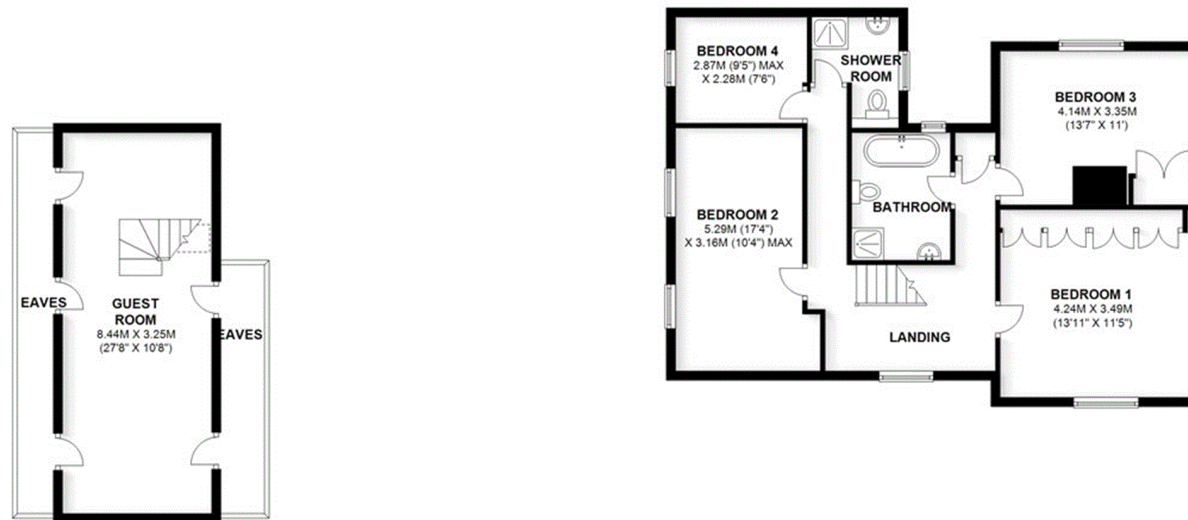


GROUND FLOOR
APPROX. 157.7 SQ. METRES (1697.1 SQ. FEET)



FIRST FLOOR
APPROX. 107.9 SQ. METRES (1160.9 SQ. FEET)



TOTAL AREA: APPROX. 265.5 SQ. METRES (2858.0 SQ. FEET)

For identification purposes, not to scale.
Plan produced using PlanUp.