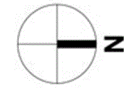
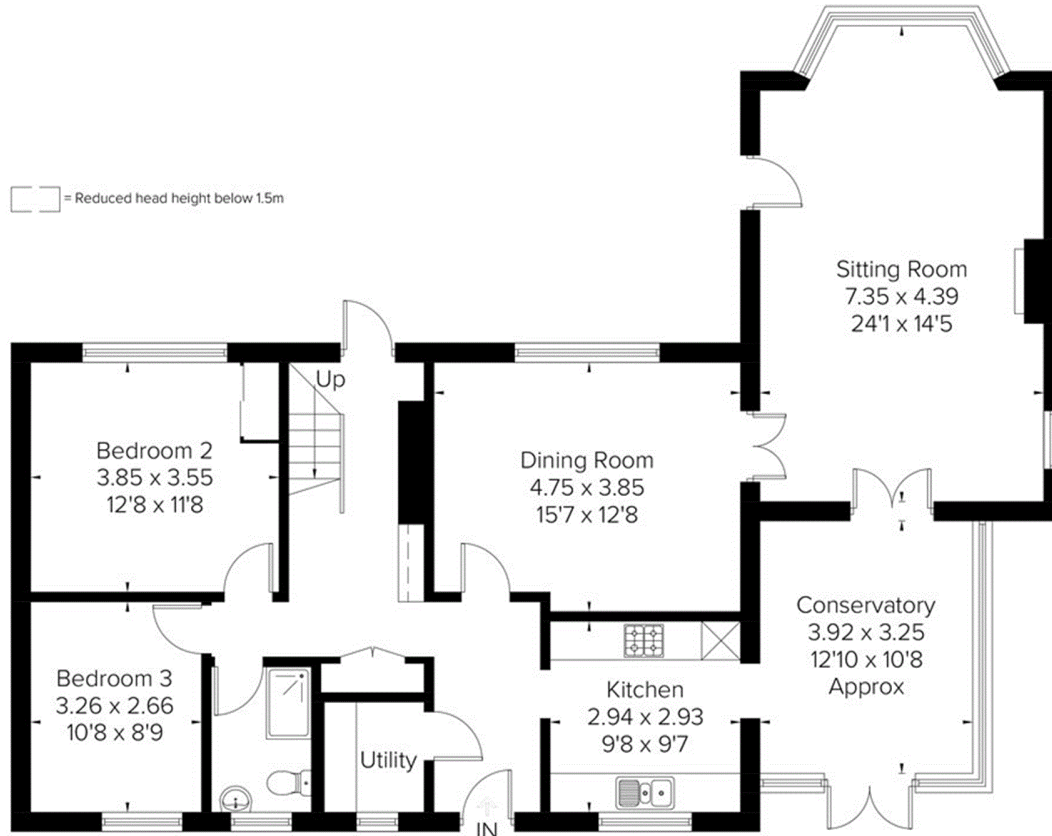


Approximate Area
 House = 155.9 sq m / 1678 sq ft (Excluding Eaves)
 Garage = 18.3 sq m / 197 sq ft
 Total = 174.2 sq m / 1875 sq ft

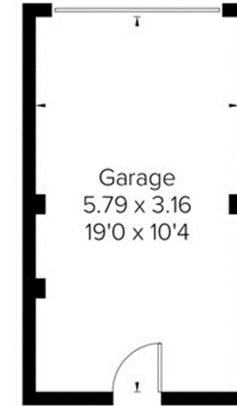


= Reduced head height below 1.5m

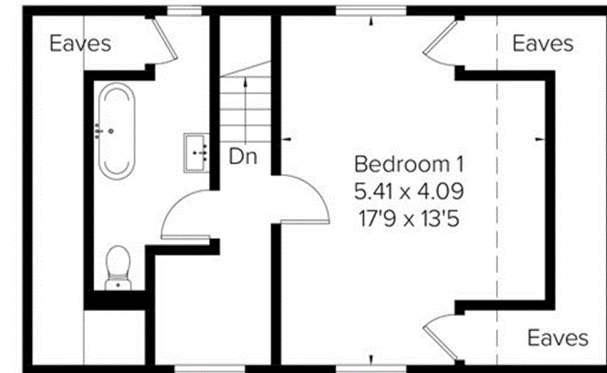


Ground Floor

Area = 123 sq m / 1324 sq ft



(Not Shown In Actual Location / Orientation)



First Floor

Area = 32.9 sq m / 354 sq ft
 (Limited Use Area = 2.5 sq m / 27 sq ft)