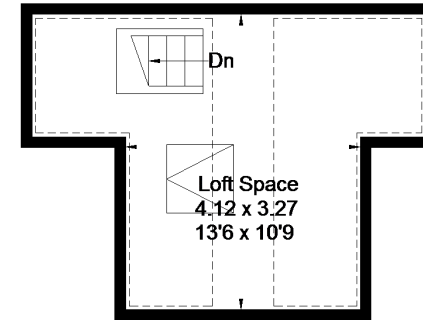
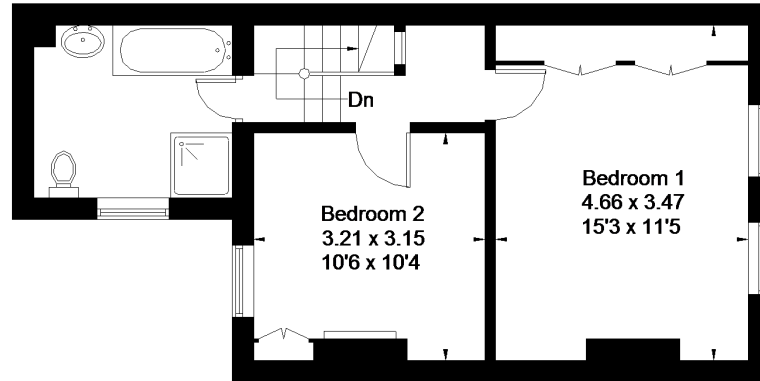


Oxford Road, Windsor

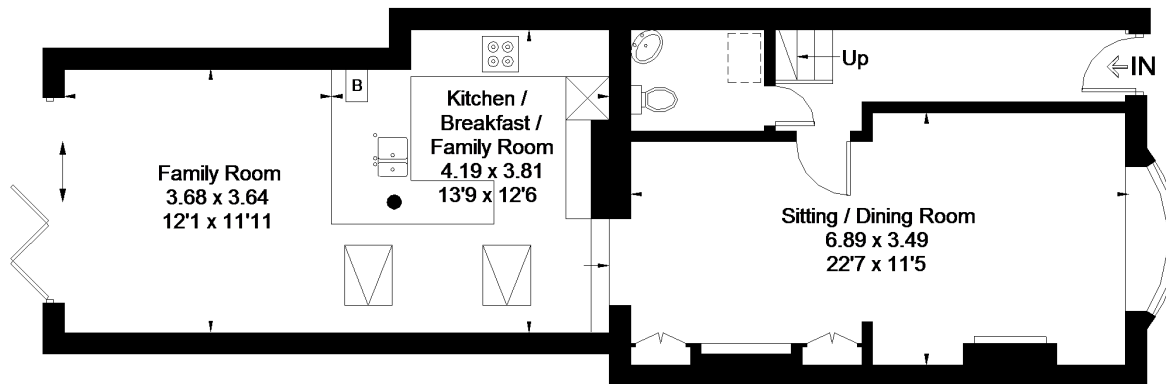
Approximate Gross Internal Area = 102.3 sq m / 1101 sq ft
Loft Space = 17 sq m / 183 sq ft
Total = 119.3 sq m / 1284 sq ft



= Reduced headroom below 1.5m / 5'0

First Floor

Loft Space



Ground Floor

FLOORPLANZ © 2017 0203 9056099 Ref: 199734

This plan is for layout guidance only. Drawn in accordance with RICS guidelines. Not drawn to scale unless stated. Windows & door openings are approximate. Whilst every care is taken in the preparation of this plan, please check all dimensions, shapes & compass bearings before making any decisions reliant upon them.