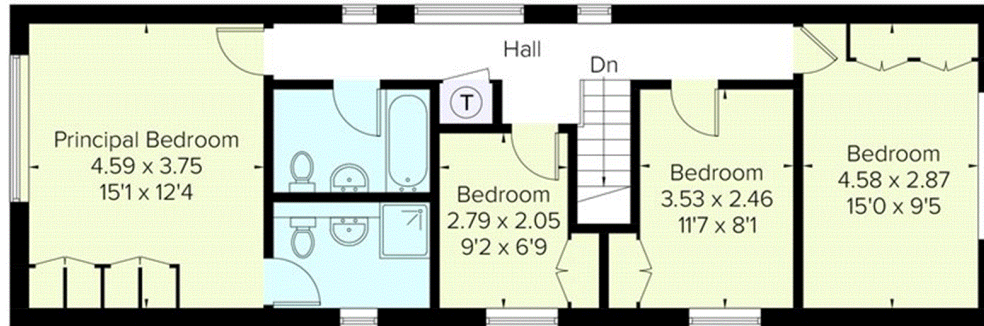
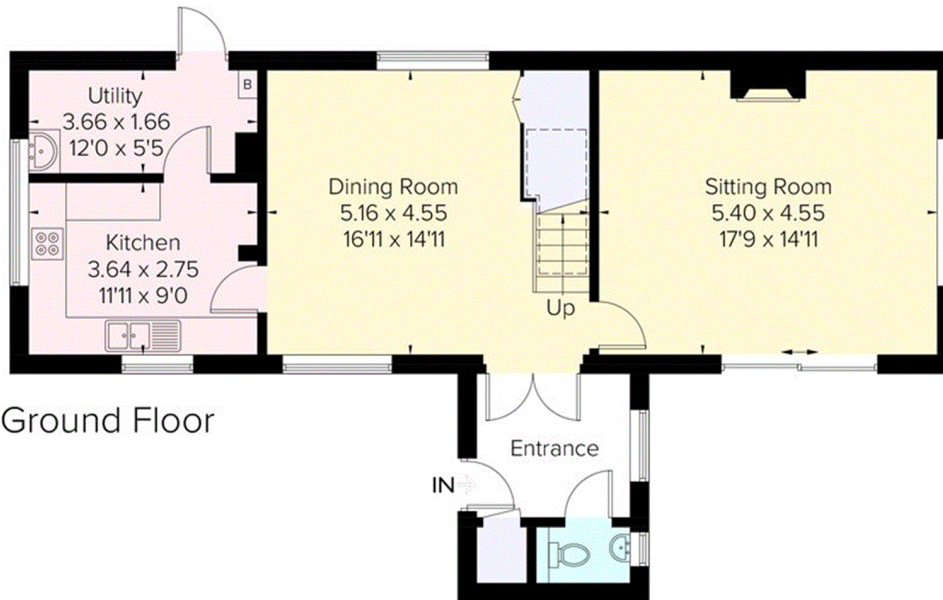


Latymers, Penshurst

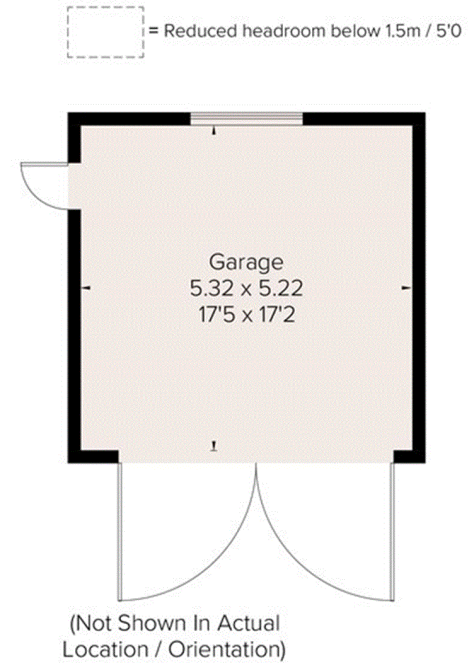
Approximate Gross Internal Area = 144.5 sq m / 1555 sq ft
 Garage = 27.6 sq m / 297 sq ft
 Total = 172.1 sq m / 1852 sq ft



First Floor



Ground Floor



FLOORPLANZ © 2018 0203 9056099 Ref: 221346

This plan is for layout guidance only. Drawn in accordance with RICS guidelines. Not drawn to scale unless stated. Windows & door openings are approximate. Whilst every care is taken in the preparation of this plan, please check all dimensions, shapes & compass bearings before making any decisions reliant upon them.