

Holtye Road, Hammerwood, West Sussex

Approximate Gross Internal Area - 426 sq m / 4584 sq ft
 Barn - 88 sq m / 947 sq ft
 Workshop - 124 sq m / 1334 sq ft
 Total - 638 sq m / 6865 sq ft

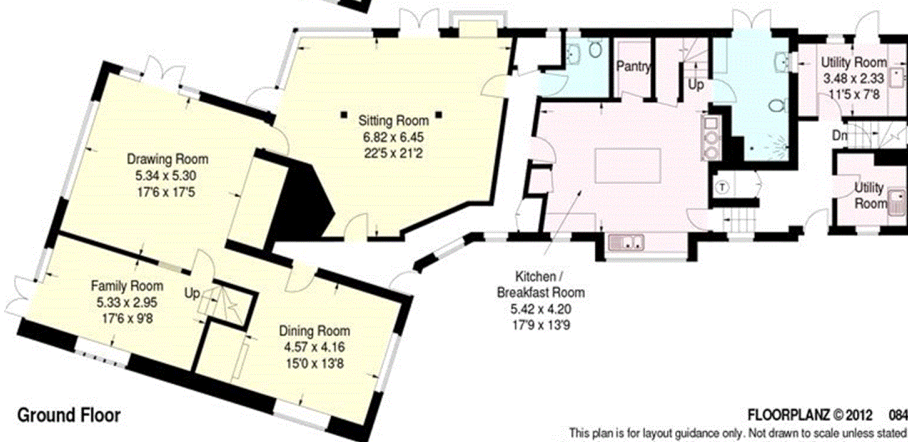
= Reduced headroom below 1.5 m / 5'0"



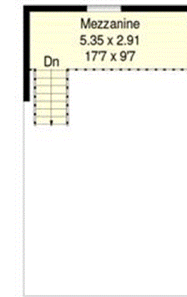
Second Floor



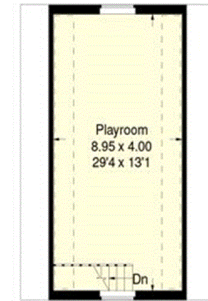
First Floor



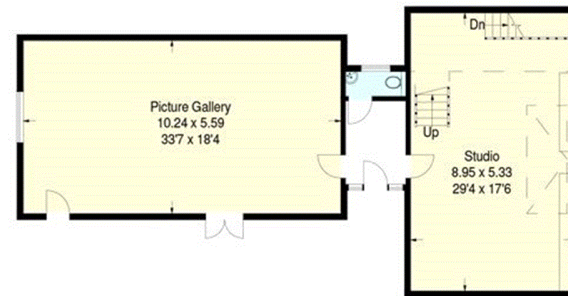
Ground Floor



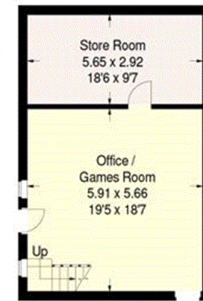
Barn Studio / Gallery - First Floor



Barn - First Floor



Barn Studio / Gallery - Ground Floor



Barn - Ground Floor

FLOORPLANZ ©2012 0845 6344080 Ref 93218

This plan is for layout guidance only. Not drawn to scale unless stated. Windows & door openings are approximate. Whilst every care is taken in the preparation of this plan, please check all dimensions, shapes & compass bearings before making any decisions reliant upon them.