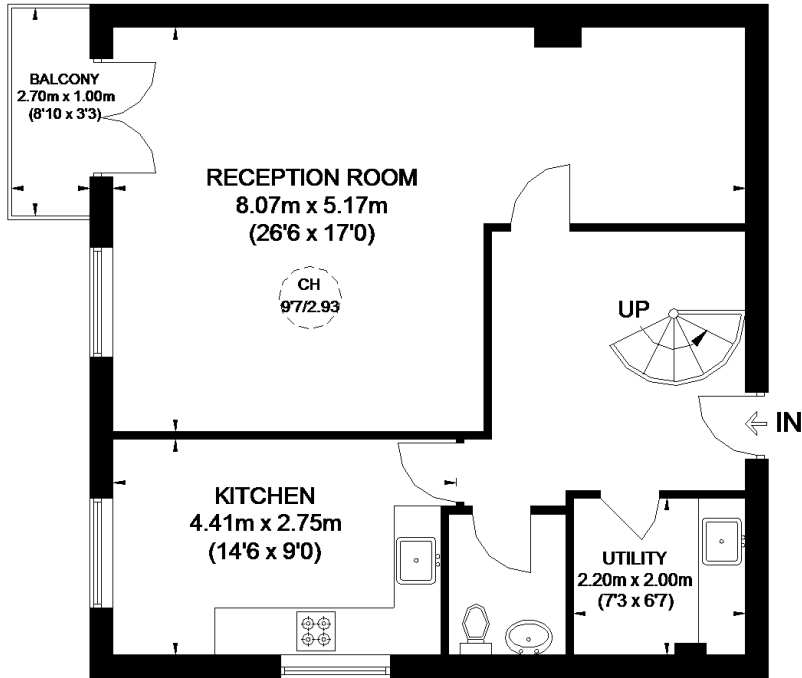
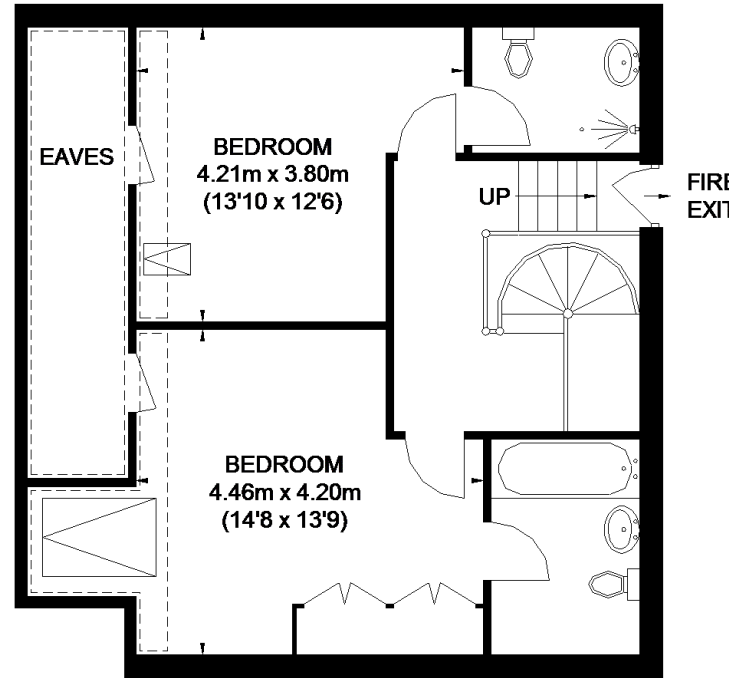


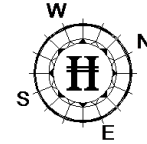
# OXFORD DRIVE






**THIRD FLOOR**



**FOURTH FLOOR**



APPROXIMATE GROSS INTERNAL AREA  
 (EXCLUDING REDUCED HEADROOM / EAVES)  
 THIRD FLOOR = 702 SQ. FT. (65.2 SQ. M.)  
 FOURTH FLOOR = 522 SQ. FT. (48.5 SQ. M.)  
 REDUCED HEADROOM  
 144 SQ. FT. (13.4 SQ. M.)  
 TOTAL = 1368 SQ. FT. (127.1 SQ. M.)

-  = CEILING HEIGHT
-  = SKYLIGHT / ROOF WINDOW
-  = REDUCED HEADROOM BELOW 1.5M / 5'0"

This plan is for layout guidance only. Not drawn to scale unless stated. Windows and door openings are approximate. Whilst every care is taken in the preparation of this plan, please check all dimensions, shapes and compass bearings before making any decisions reliant upon them. Please be advised that Hamptons International / our agents have not seen or reviewed any building regulations or planning permission in relation to works carried out to the property (ID514400)