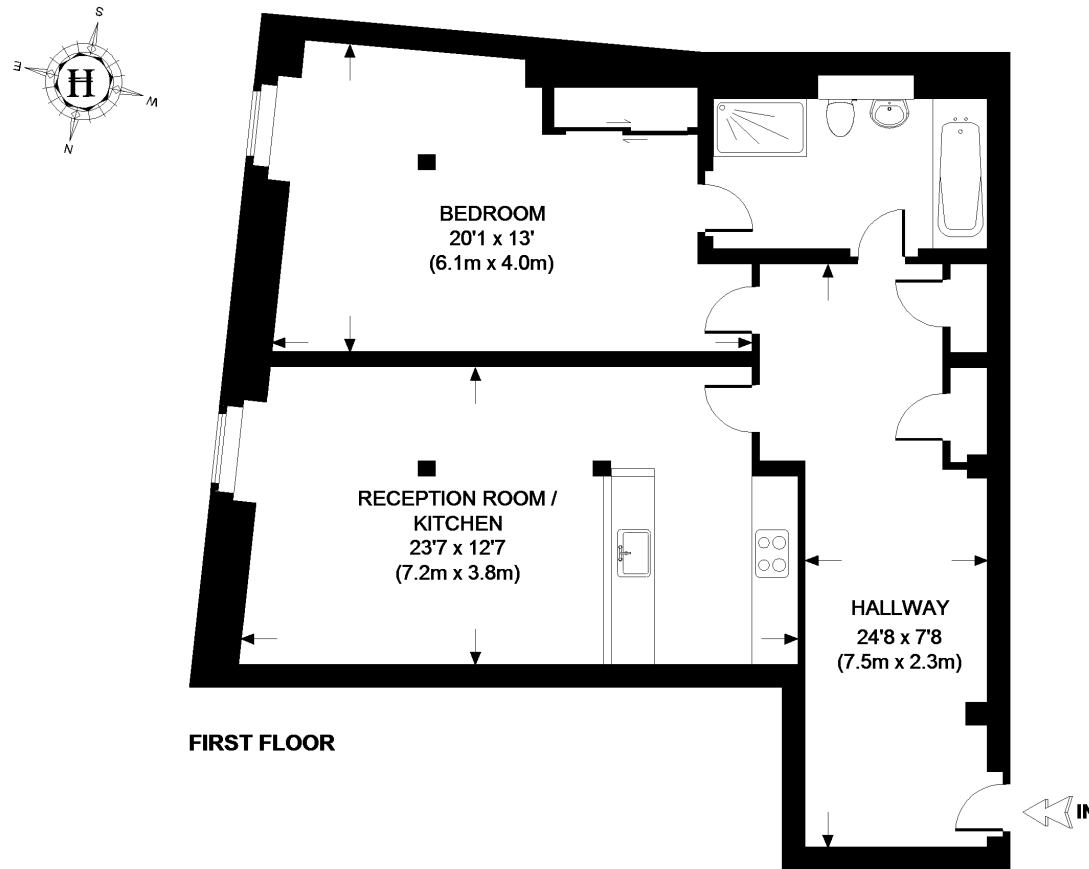


### EAST INDIA COURT



**APPROXIMATE GROSS INTERNAL AREA = 828 SQ.FT. (77 SQ. M.)**

This plan is for layout guidance only. Not drawn to scale unless stated. Windows & door openings are approximate. Whilst every care is taken in the preparation of this plan, please check all dimensions, shapes & compass bearings before making any decisions reliant upon it.