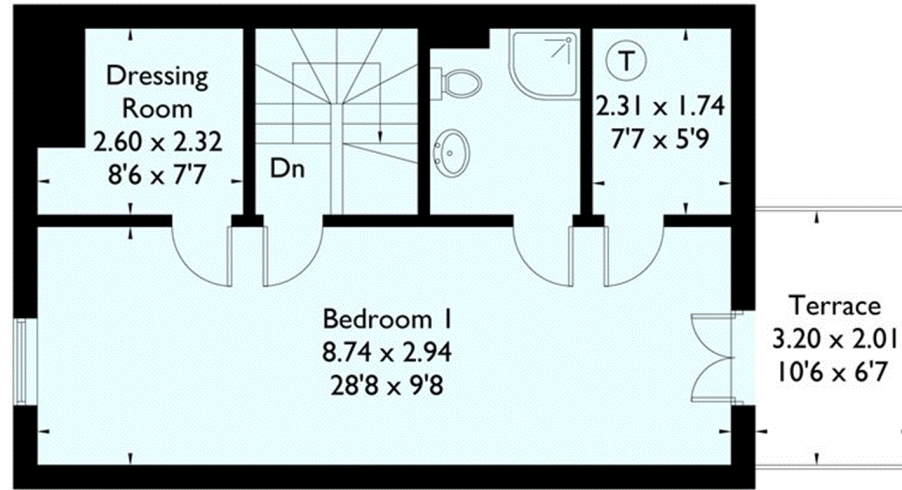
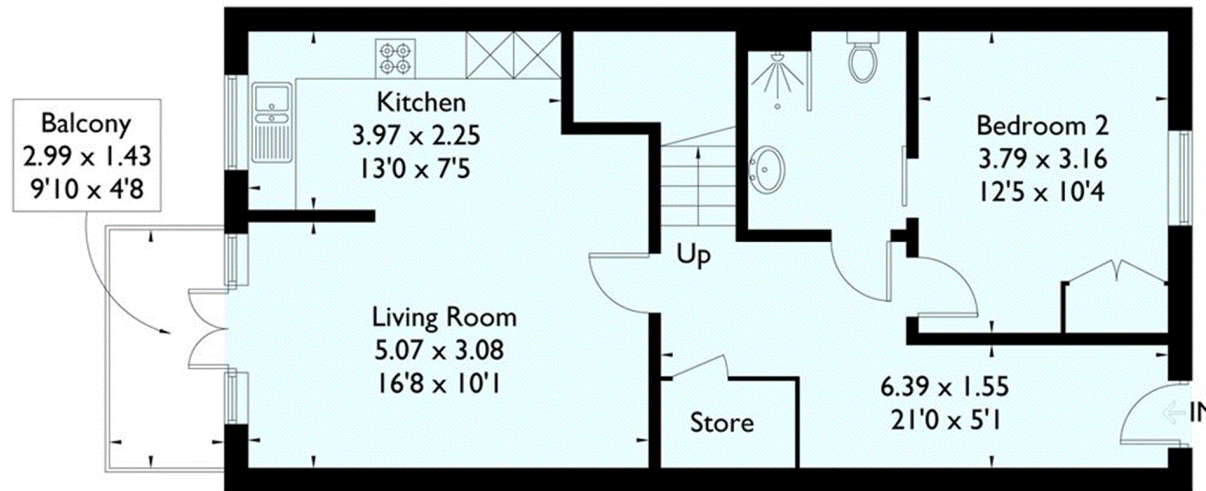


### Rise Road, Lynwood Village, Sunningdale

Approximate Gross Internal Area  
111.9 sq m / 1204 sq ft



Third Floor



Second Floor

Floorplanz © 2018  
0203 9056099 Ref: 220045

This plan is for layout guidance only.  
Drawn in accordance with  
RICS guidelines. Not drawn to  
scale, unless stated. Windows &  
door openings are approximate.  
Whilst every care is taken in the  
preparation of this plan, please check  
all dimensions, shapes & compass  
bearings before making any  
decisions reliant upon them.