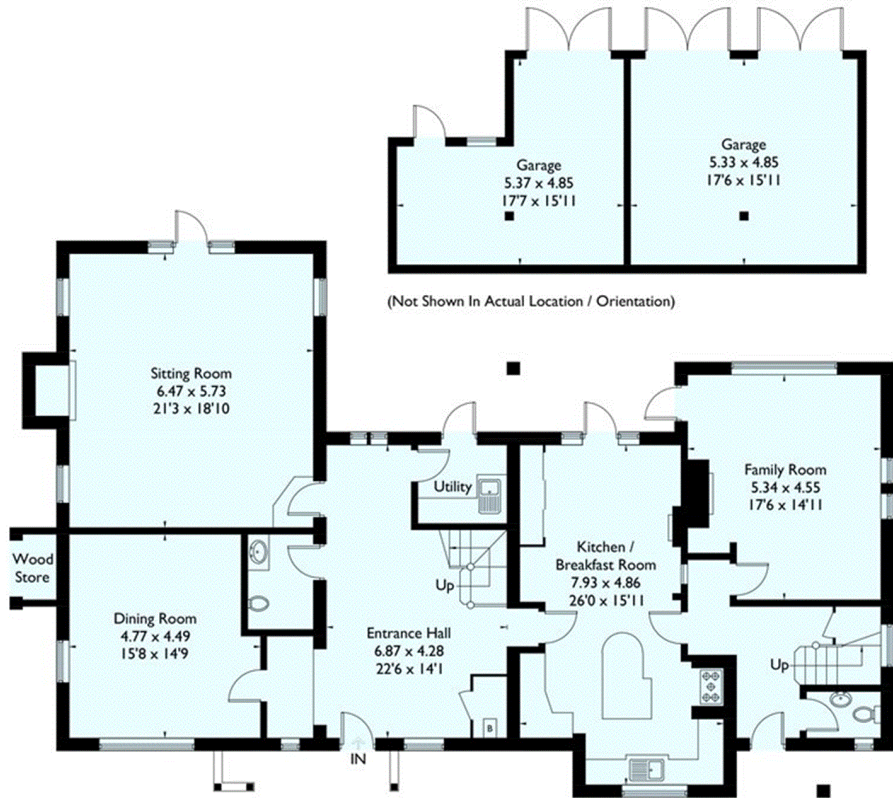


Earleydene, Sunningdale, Ascot

Approximate Gross Internal Area = 325.6 sq m / 3505 sq ft
 (Excluding Eaves / Wood Store)
 Garages = 47 sq m / 506 sq ft
 Total = 372.6 sq m / 4011 sq ft



Ground Floor



First Floor

= Reduced headroom below 1.5m / 5'0"

FLOORPLANZ © 2018 0203 9056099 Ref: 217585

This plan is for layout guidance only. Drawn in accordance with RICS guidelines. Not drawn to scale unless stated. Windows & door openings are approximate. Whilst every care is taken in the preparation of this plan, please check all dimensions, shapes & compass bearings before making any decisions reliant upon them.