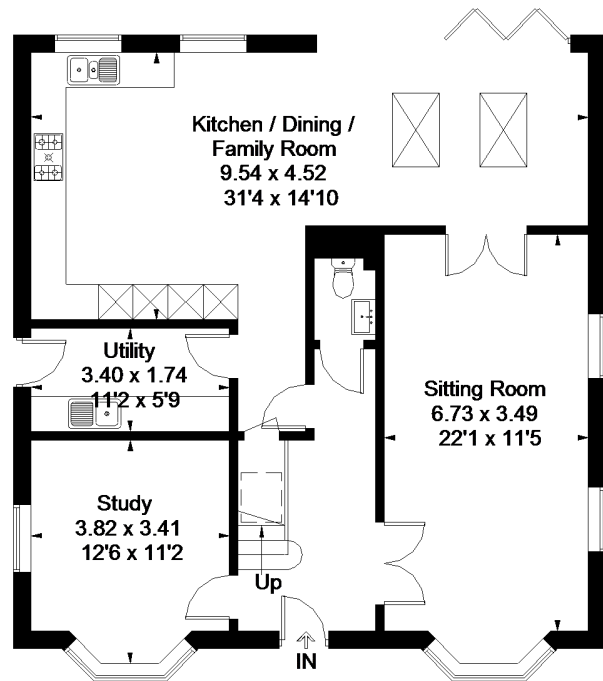
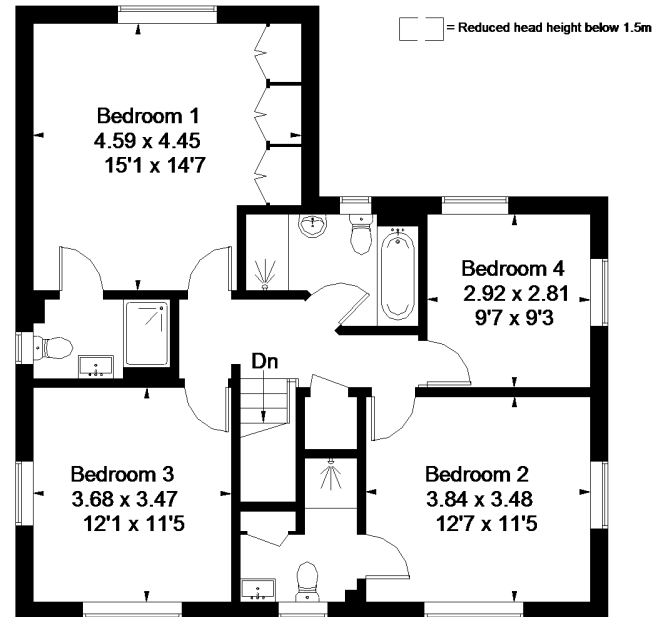


Approximate Floor Area = 174.9 sq m / 1883 sq ft
Including Limited Use Area (1.9 sq m / 20 sq ft)
Garage = 30.4 sq m / 327 sq ft
Total = 205.3 sq m / 2210 sq ft



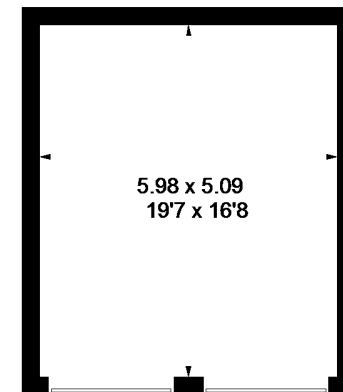
Ground Floor

Area = 96.9 sq m / 1043 sq ft
(Limited Use Area = 1.9 sq m / 20 sq ft)



First Floor

Area = 78.0 sq m / 840 sq ft



Garage

Area = 30.4 sq m / 327 sq ft