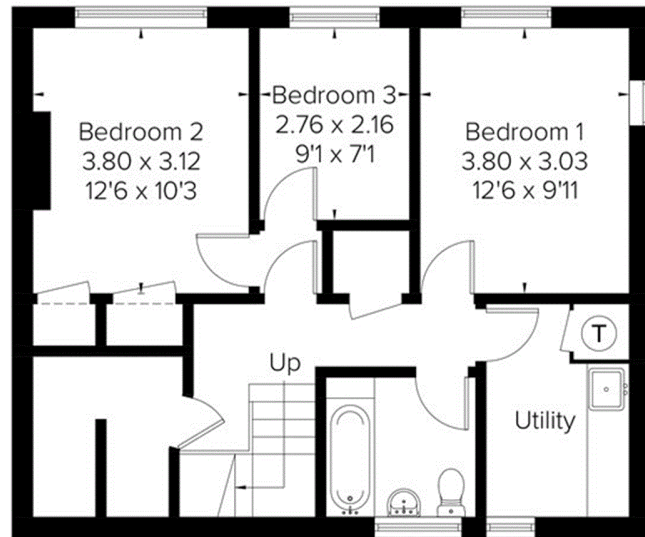


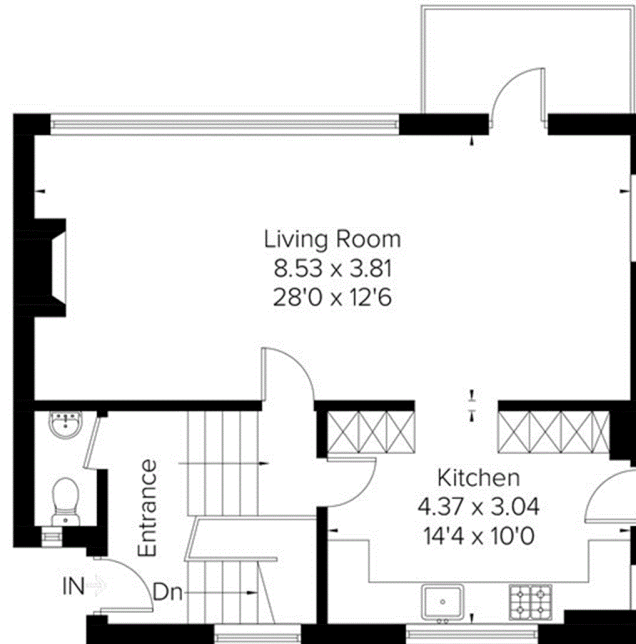
Approximate Area = 120.7 sq m / 1299 sq ft
Garage = 16 sq m / 172 sq ft
Total = 136.7 sq m / 1471 sq ft
Including Limited Use Area (3.4 sq m / 37 sq ft)

= Reduced head height below 1.5m



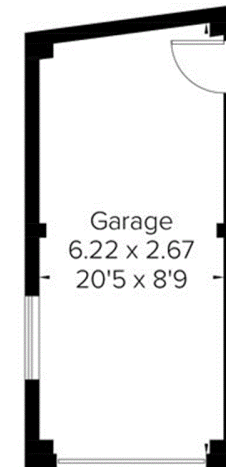
Lower Ground Floor

Area = 60.8 sq m / 654 sq ft
(Limited Use Area = 2.2 sq m / 24 sq ft)



Ground Floor

Area = 59.9 sq m / 645 sq ft
(Limited Use Area = 1.2 sq m / 13 sq ft)



(Not Shown In Actual Location / Orientation)