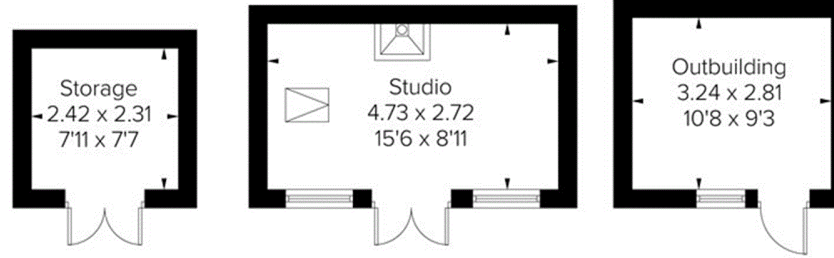
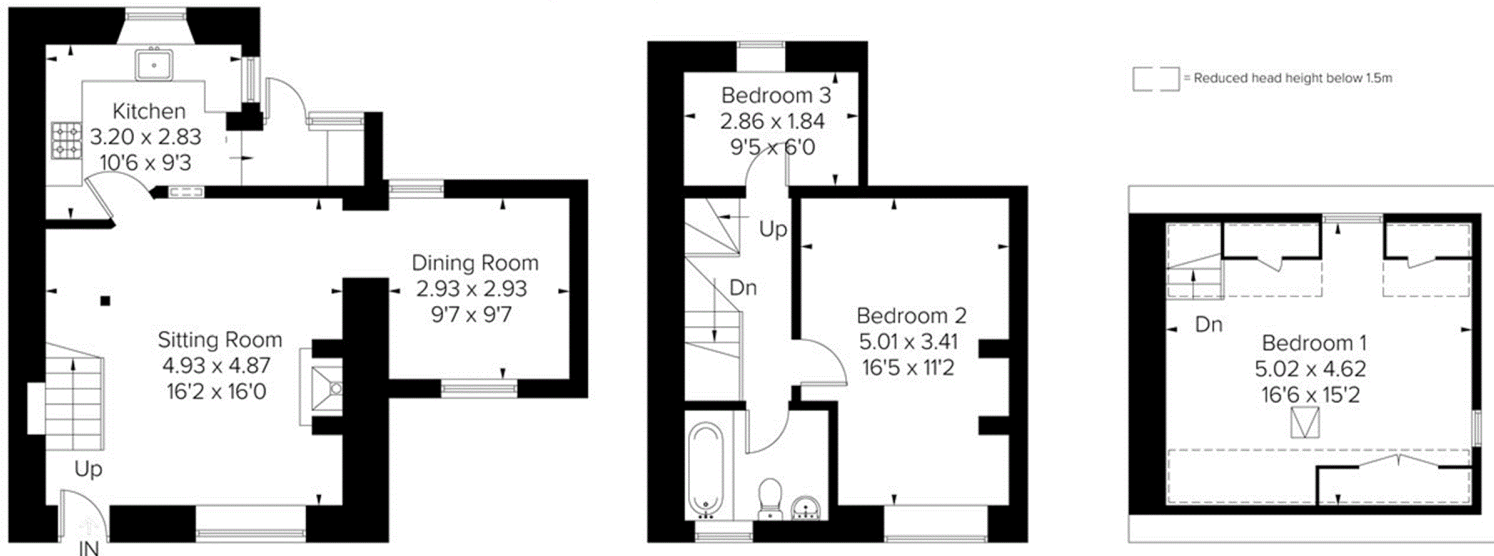


Approximate Floor Area = 104.1 sq m / 1121 sq ft  
 Including Limited Use Area (12.3 sq m / 132 sq ft)  
 Outbuildings = 27.4 sq m / 295 sq ft  
 Total = 131.5 sq m / 1416 sq ft



Outbuildings  
 Area = 29.1 sq m / 313 sq ft



Ground Floor  
 Area = 46.9 sq m / 505 sq ft  
 (Limited Use Area = 1.6 sq m / 17 sq ft)

First Floor  
 Area = 34.2 sq m / 368 sq ft  
 (Limited Use Area = 1.4 sq m / 15 sq ft)

Second Floor  
 Area = 23.0 sq m / 248 sq ft  
 (Limited Use Area = 9.3 sq m / 100 sq ft)