

West View Elm Grove, Salisbury

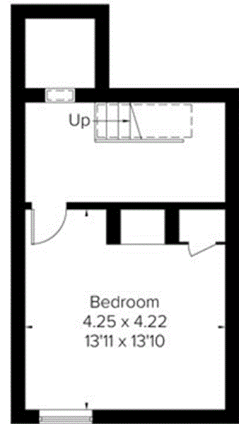
Approximate Gross Internal Area = 259 sq m / 2788 sq ft
(Including Garage)

Basement = 31.1 sq m / 335 sq ft

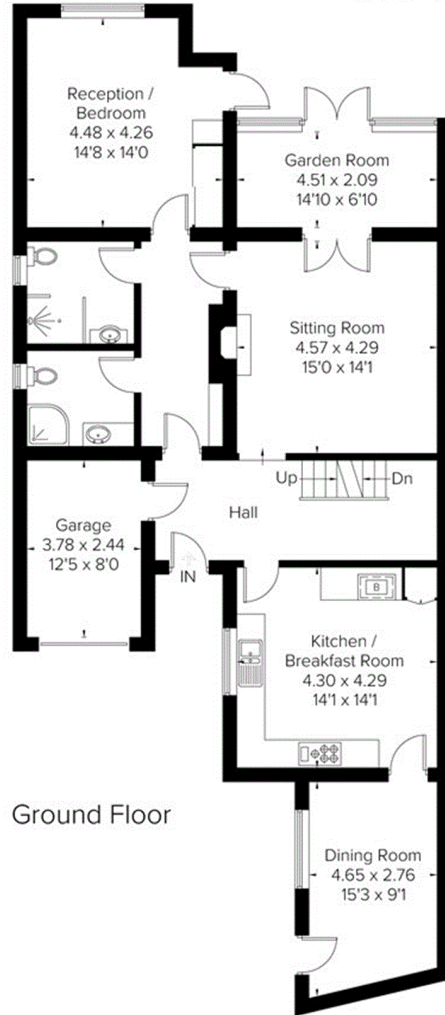
Total = 290.1 sq m / 3123 sq ft



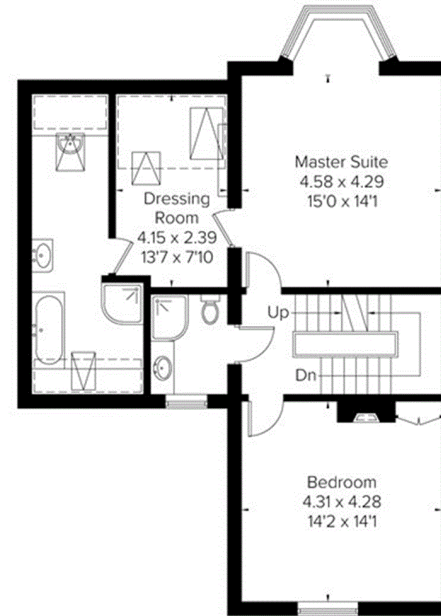
= Reduced headroom below 1.5m / 5'0



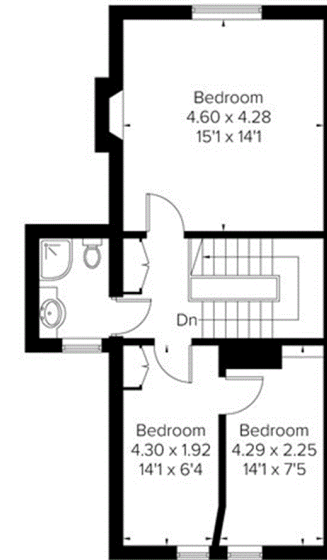
Basement



Ground Floor



First Floor



Second Floor

FLOORPLANZ © 2018 0203 9056099 Ref: 224081

This plan is for layout guidance only. Drawn in accordance with RICS guidelines. Not drawn to scale unless stated. Windows & door openings are approximate. Whilst every care is taken in the preparation of this plan, please check all dimensions, shapes & compass bearings before making any decisions reliant upon them.