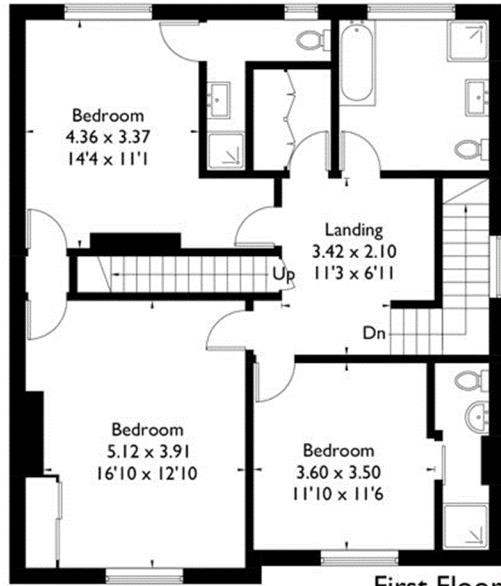
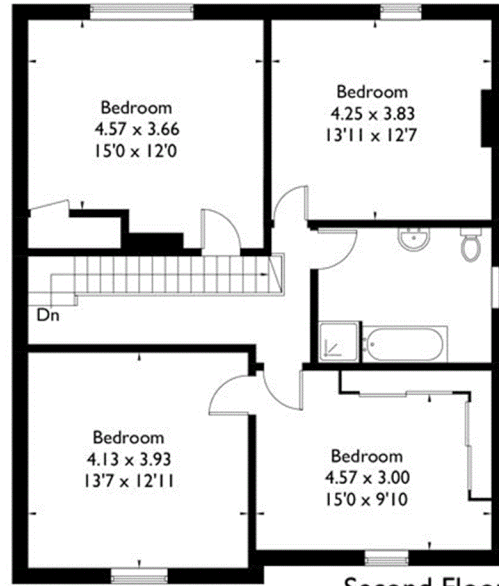


Boreham Road, Warminster

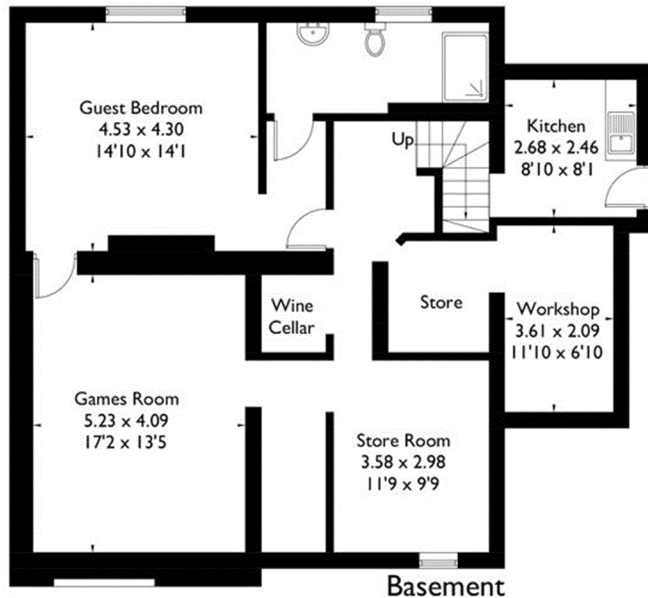
Approximate Gross Internal Area = 297.5 sq m / 3202 sq ft
Basement = 93.1 sq m / 1002 sq ft
Total = 390.6 sq m / 4204 sq ft



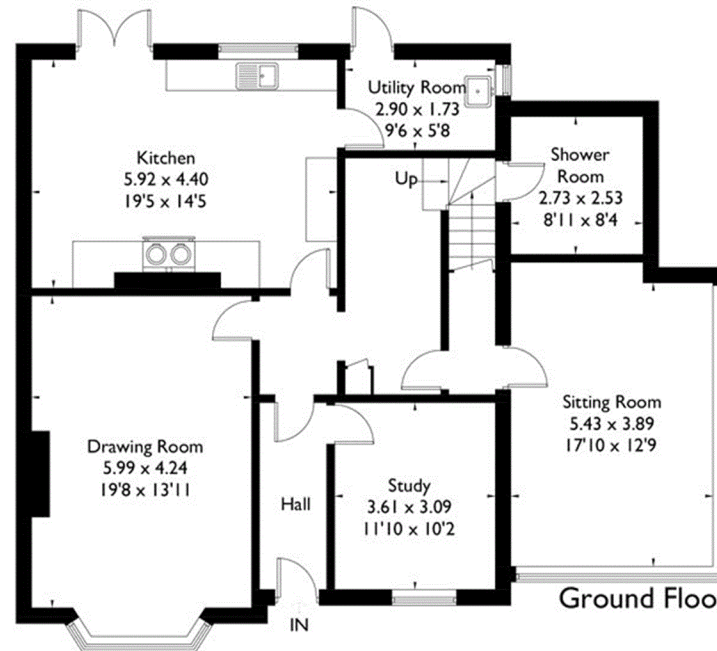
First Floor



Second Floor



Basement



Ground Floor

Job Ref: 184682

Illustration for identification purposes only. The plan has been created using previous drawings as reference material, therefore the accuracy of information cannot be guaranteed. Not To Scale.