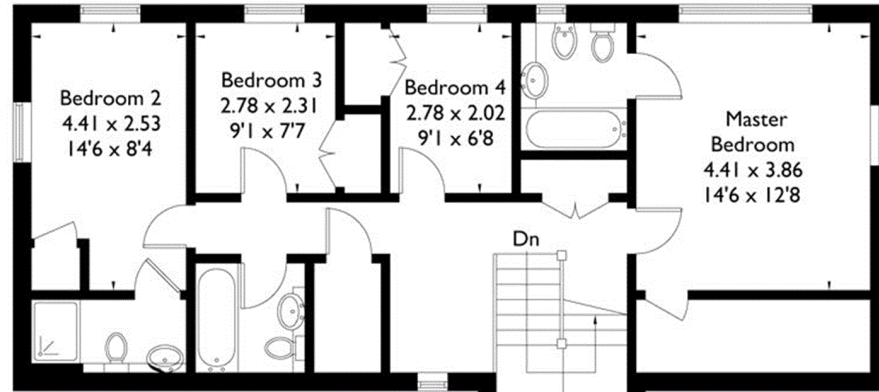
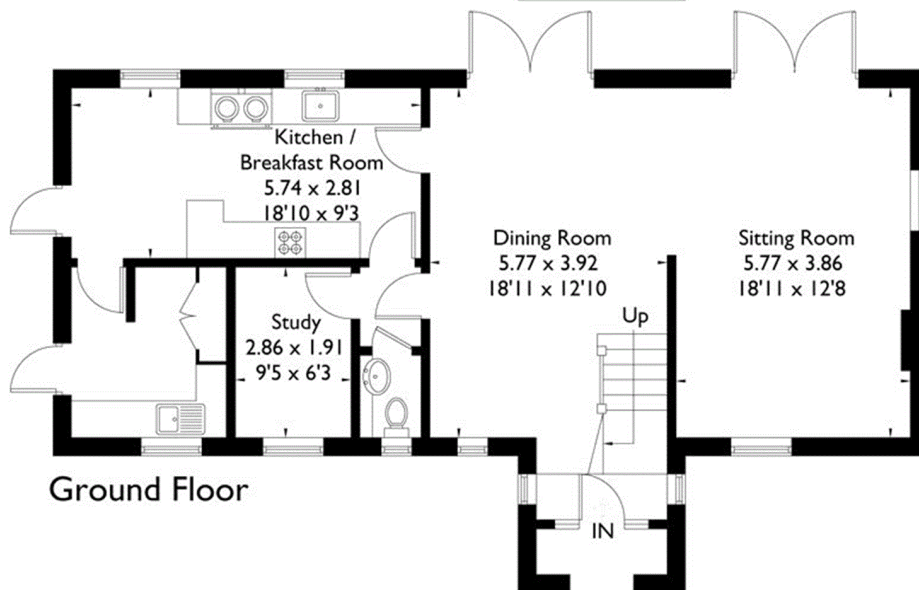


Abbotswell Road, Frogham, Fordingbridge

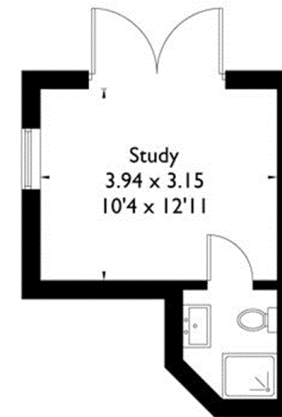
Approximate Gross Internal Area
House = 166.0 sq m / 1787 sq ft
Annexe = 48.2 sq m / 519 sq ft
Total = 214.2 sq m / 2305 sq ft



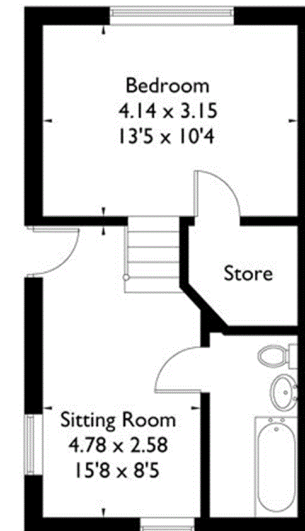
First Floor



Ground Floor



Annexe Lower Level



Annexe Upper Level

(Not Shown In Actual Location / Orientation)

Job Ref: 214442
Illustration for identification purposes only. The plan has been created using previous drawings as reference material, therefore the accuracy of information cannot be guaranteed.
Not To Scale.