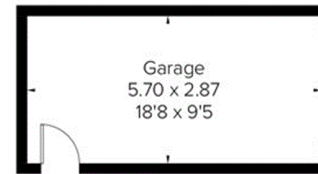
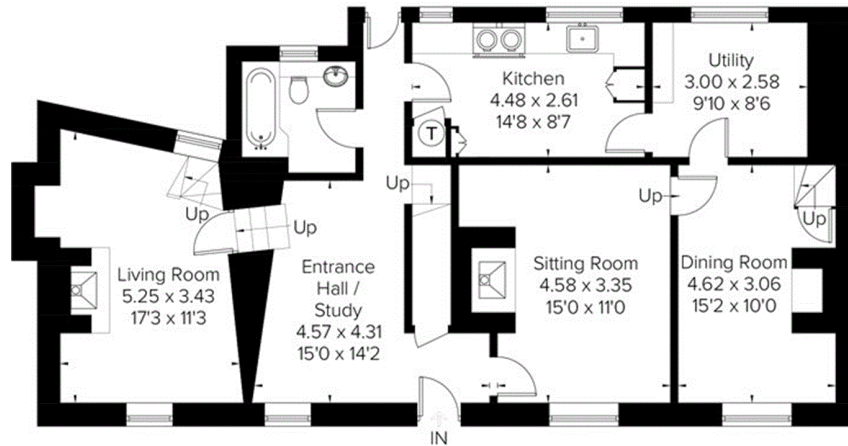


Approximate Area = 169.5 sq m / 1825 sq ft  
Garage = 16.3 sq m / 175 sq ft  
Total = 185.8 sq m / 2000 sq ft  
Including Limited Use Area (8.5 sq m / 91 sq ft)

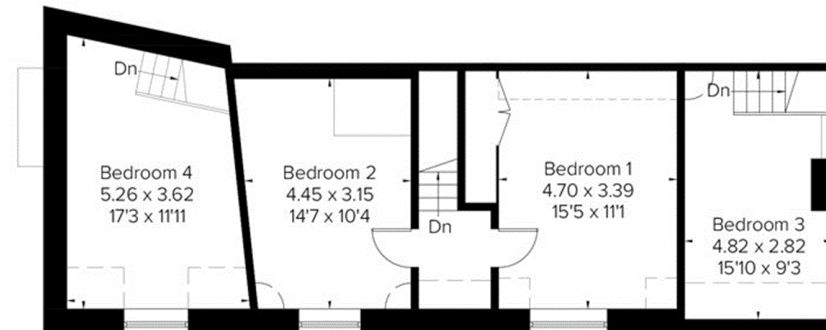


(Not Shown In Actual Location / Orientation)



Ground Floor

Area = 100.3 sq m / 1080 sq ft  
(Limited Use Area = 0.7 sq m / 7 sq ft)



First Floor

Area = 69.2 sq m / 745 sq ft  
(Limited Use Area = 7.8 sq m / 84 sq ft)