


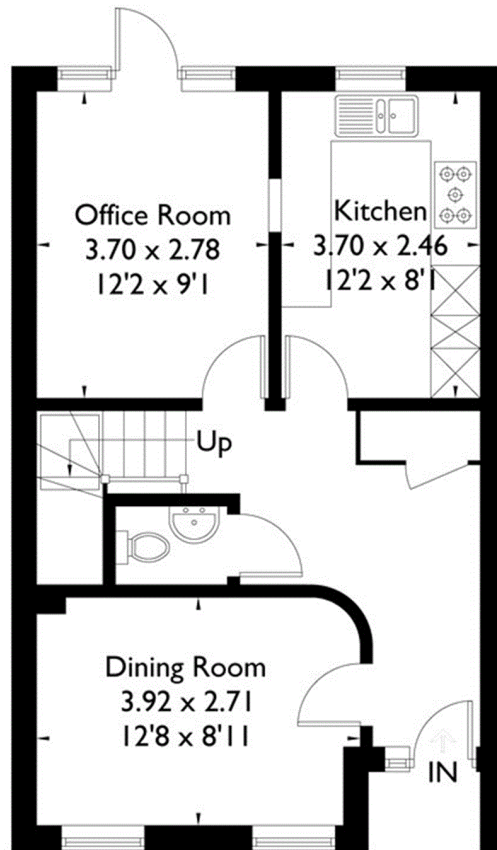
# Clarence Court, Greencroft Street, Salisbury



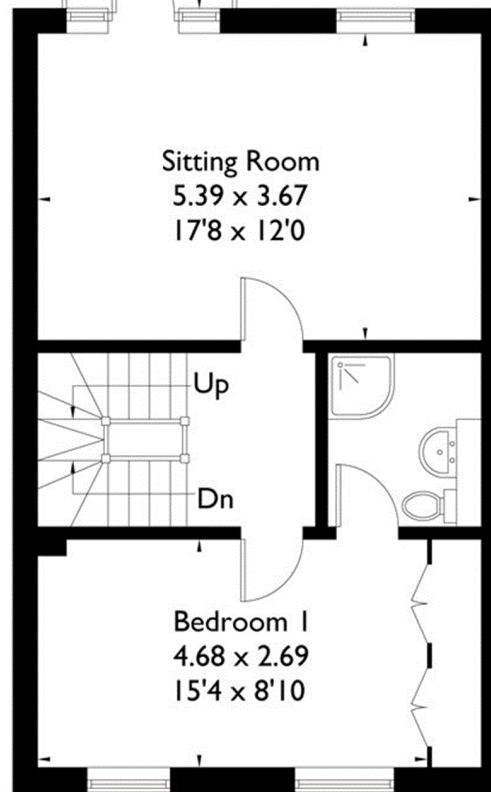
Approximate Gross Internal Area  
140.4 sq m / 1511 sq ft

Balcony  
2.00 x 1.00  
6'7 x 3'3

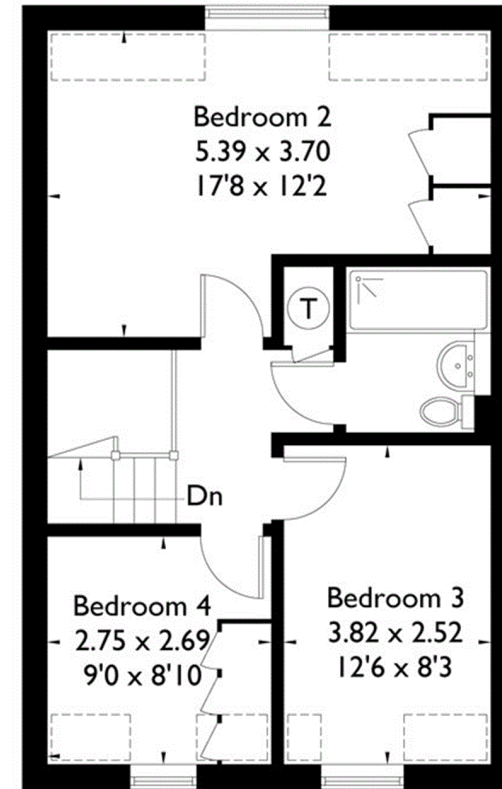
 = Reduced headroom below 1.5m / 5'0



Ground Floor



First Floor



Second Floor

FLOORPLANZ © 2018 0203 9056099 Ref: 211291

This plan is for layout guidance only. Drawn in accordance with RICS guidelines. Not drawn to scale unless stated. Windows & door openings are approximate. Whilst every care is taken in the preparation of this plan, please check all dimensions, shapes & compass bearings before making any decisions reliant upon them.