

### Church Street, Amesbury, Salisbury

Approximate Gross Internal Area = 173.5 sq m / 1868 sq ft  
 Store = 3.5 sq m / 38 sq ft  
 Workshop = 23.8 sq m / 256 sq ft  
 Total = 200.8 sq m / 2162 sq ft



= Reduced headroom below 1.5m / 5'0"

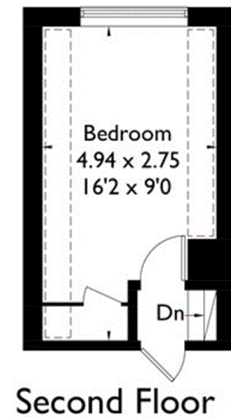
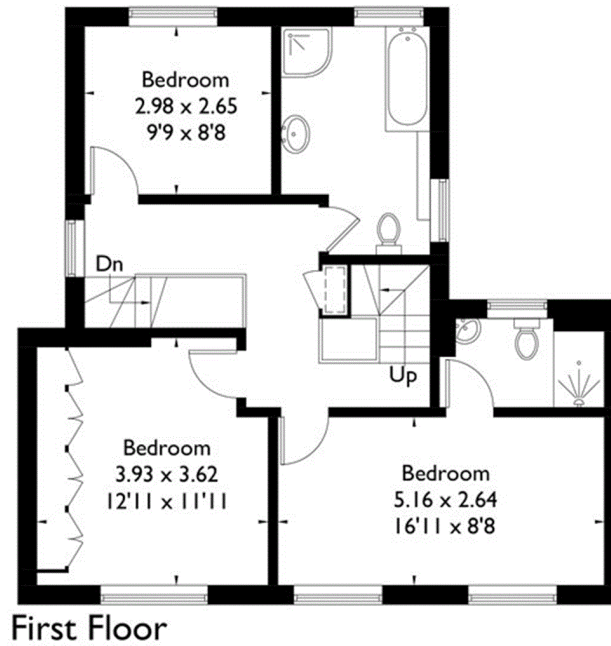
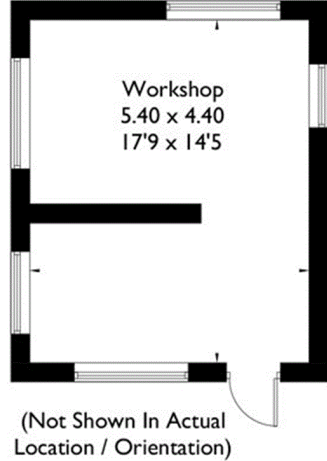
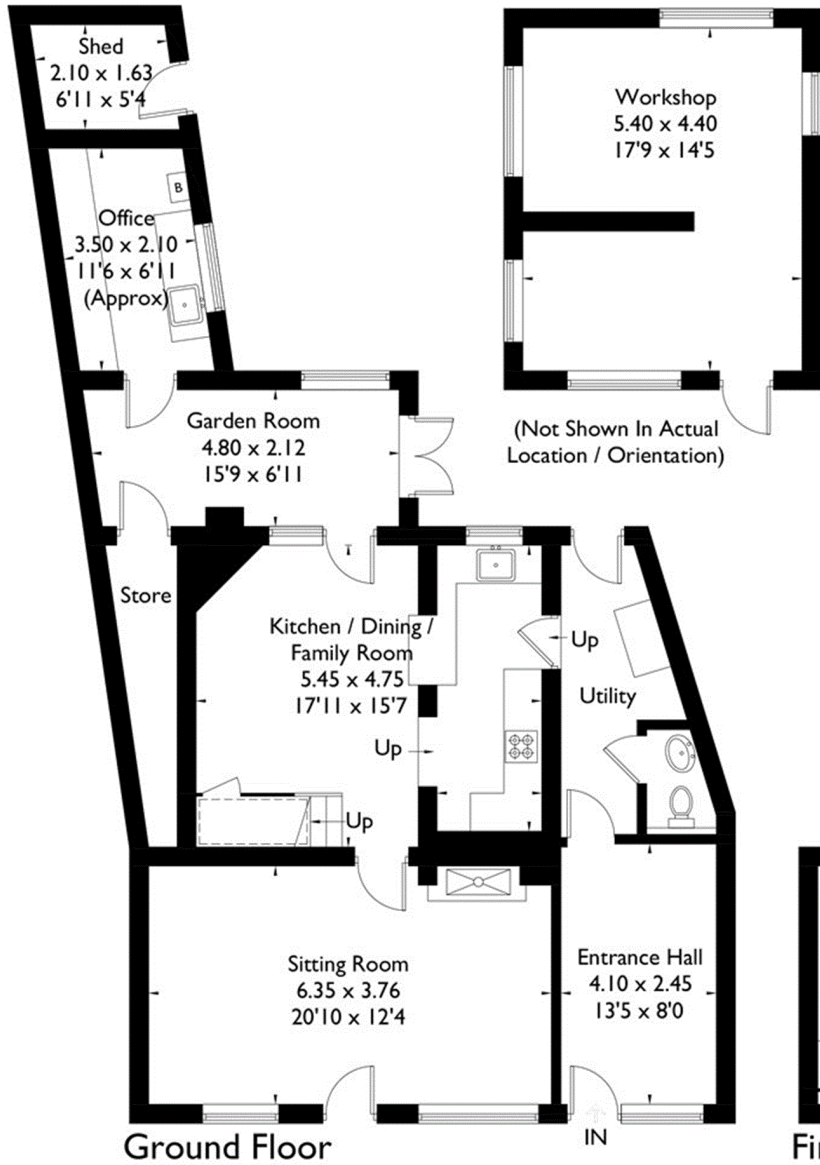


Illustration for identification purposes only. Not to scale  
 Ref: 211297