

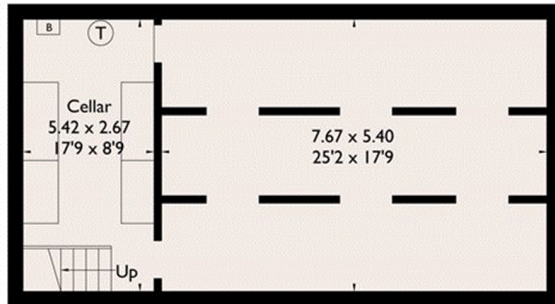
London Road, Wrotham Heath, Sevenoaks

Approximate Gross Internal Area = 237.1 sq m / 2553 sq ft (Excluding Void)

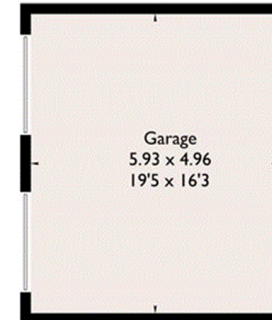
Cellar = 56.2 sq m / 604 sq ft

Garage = 29.4 sq m / 316 sq ft

Total = 322.7 sq m / 3473 sq ft

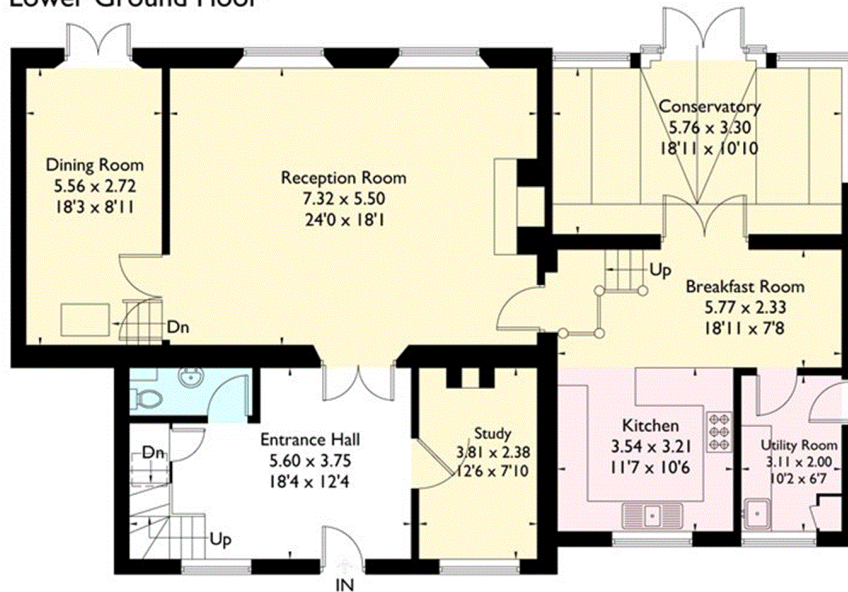


Lower Ground Floor

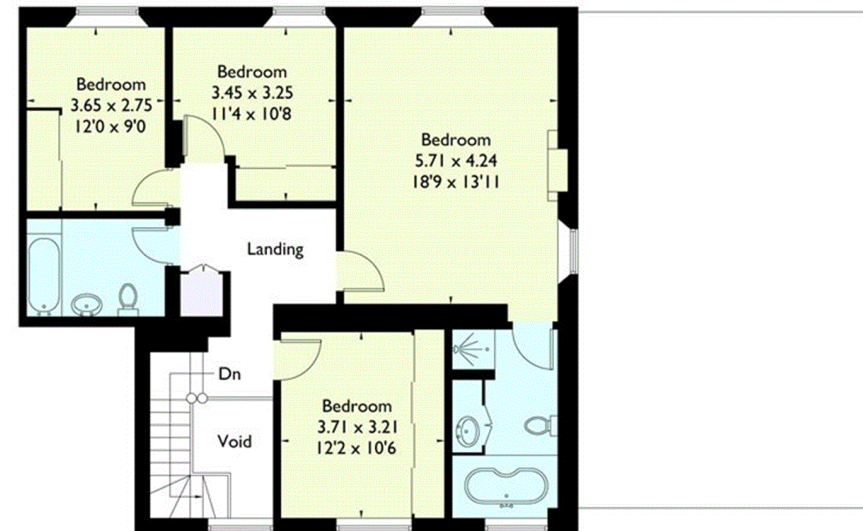


(Not Shown In Actual Location / Orientation)

= Reduced headroom below 1.5m / 5'0



Ground Floor



First Floor

FLOORPLANZ © 2017 0203 9056099 Ref: 181760

This plan is for layout guidance only. Drawn in accordance with RICS guidelines. Not drawn to scale unless stated. Windows & door openings are approximate. Whilst every care is taken in the preparation of this plan, please check all dimensions, shapes & compass bearings before making any decisions reliant upon them.