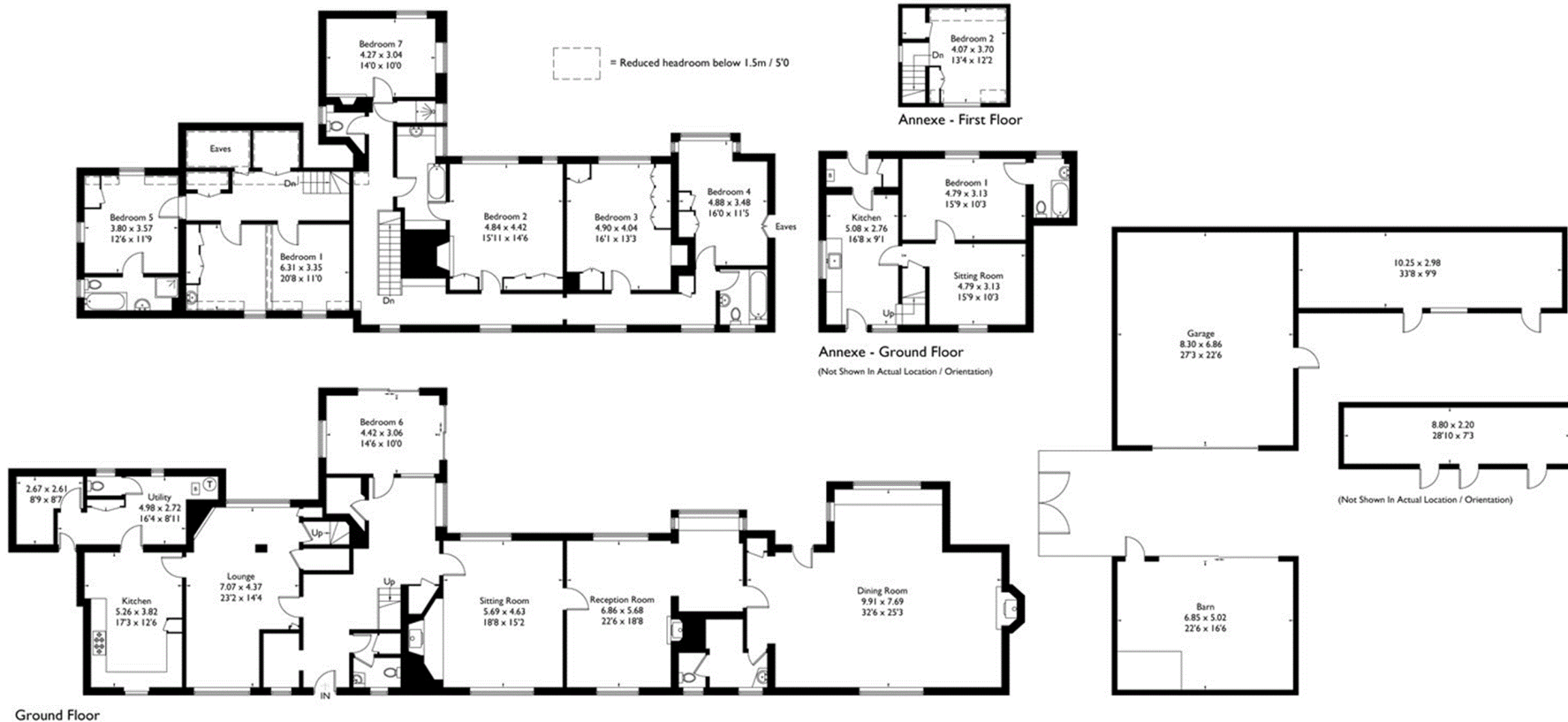


# Chipperfield Road, Bovington, Hemel Hempstead

Approximate Gross Internal Area = 443.3 sq m / 4772 sq ft  
(Excluding Eaves)

Annexe = 69.1 sq m / 744 sq ft  
Garage = 56.8 sq m / 611 sq ft  
Barn = 34.2 sq m / 368 sq ft  
Outbuilding = 49.6 sq m / 534 sq ft  
Total = 653 sq m / 7029 sq ft



FLOORPLANZ © 2018 0203 9056099 Ref: 207465

This plan is for layout guidance only. Drawn in accordance with RICS guidelines. Not drawn to scale unless stated. Windows & door openings are approximate. Whilst every care is taken in the preparation of this plan, please check all dimensions, shapes & compass bearings before making any decisions reliant upon them.