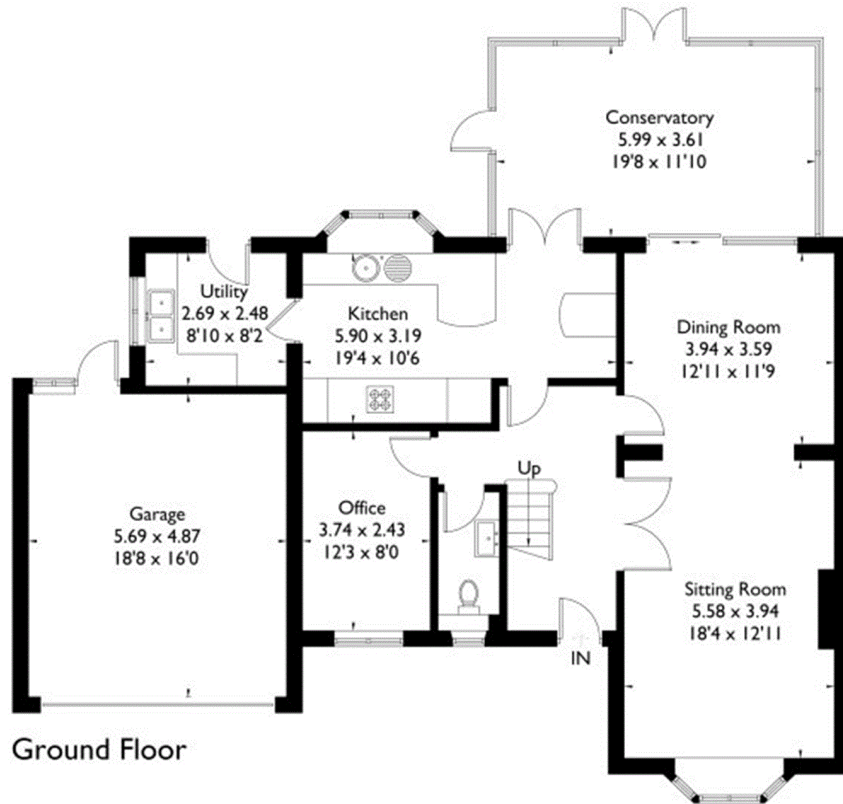


Chorleywood, Rickmansworth

Approximate Gross Internal Area = 203.4 sq m / 2189 sq ft
Garage = 27.8 sq m / 299 sq ft
Total = 231.2 sq m / 2489 sq ft



FLOORPLANZ © 2015 0845 6344080 Ref: 153149

This plan is for layout guidance only. Drawn in accordance with RICS guidelines. Not drawn to scale unless stated. Windows & door openings are approximate. Whilst every care is taken in the preparation of this plan, please check all dimensions, shapes & compass bearings before making any decisions reliant upon them.