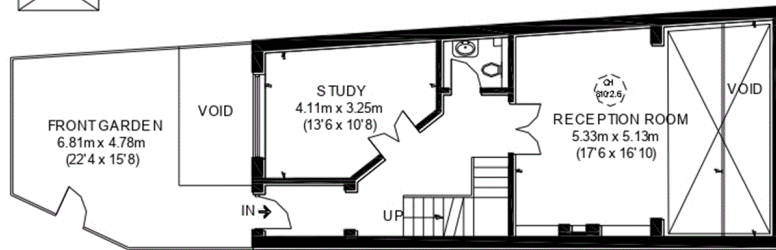
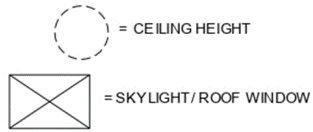
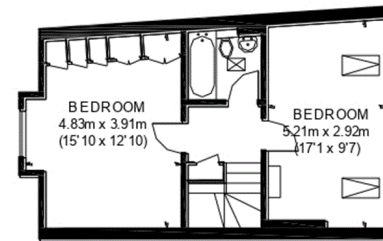
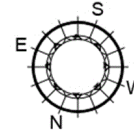


KINGSWOOD COURT

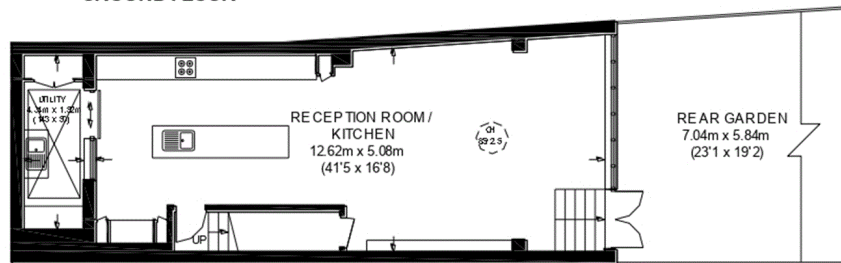
APPROXIMATE GROSS INTERNAL AREA
 LOWER GROUND FLOOR = 789 SQ. FT. (73.3 SQ. M.)
 GROUND FLOOR = 611 SQ. FT. (56.8 SQ. M.) (EXCLUDING VOID)
 FIRST FLOOR = 510 SQ. FT. (47.4 SQ. M.)
 SECOND FLOOR = 463 SQ. FT. (43 SQ. M.)
 TOTAL = 2373 SQ. FT. (220.5 SQ. M.)



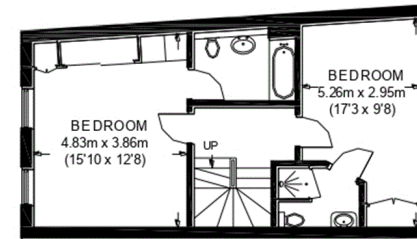
GROUND FLOOR



SECOND FLOOR



LOWER GROUND FLOOR



FIRST FLOOR

This plan is for layout guidance only. Not drawn to scale unless stated. Windows and door openings are approximate. Whilst every care is taken in the preparation of this plan, please check all dimensions, shapes and compass bearings before making any decisions reliant upon them. Please be advised that Countrywide/our agents have not seen or reviewed any building regulations or planning permission in relation to works carried out to the property (ID574117)