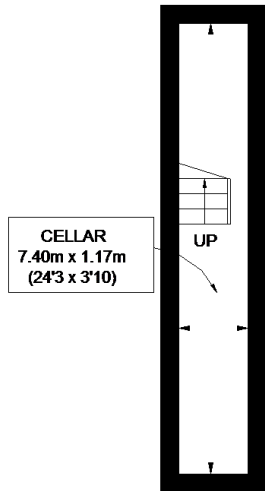
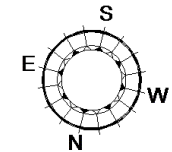
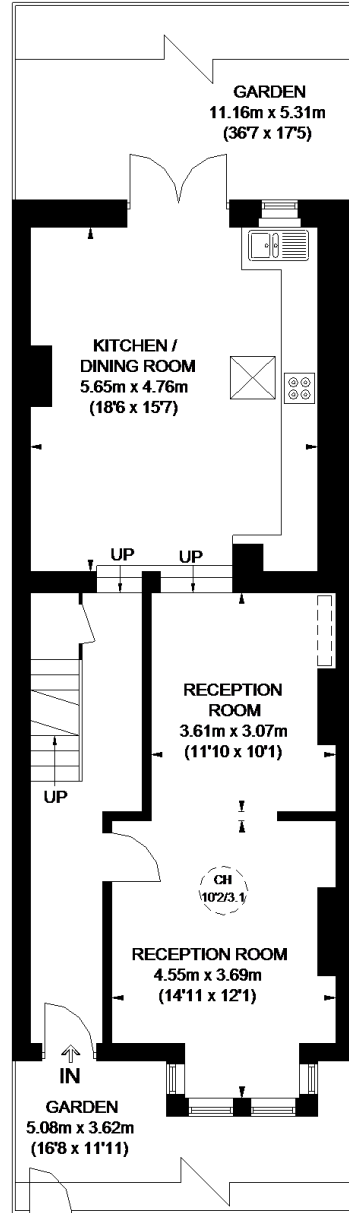


# ST. MARGARET'S ROAD

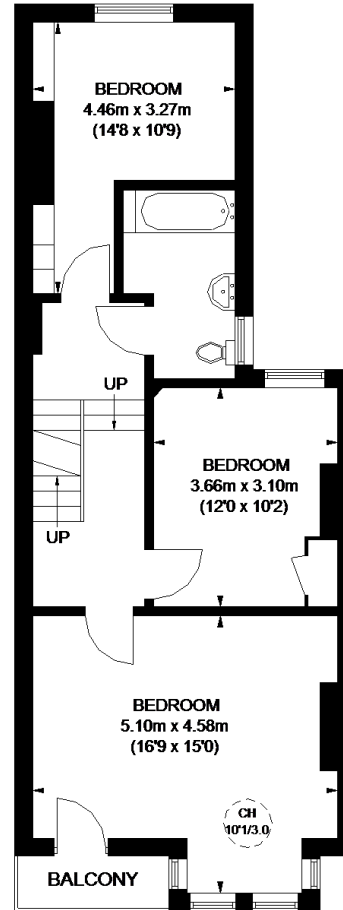


CELLAR  
7.40m x 1.17m  
(24'3" x 3'10")

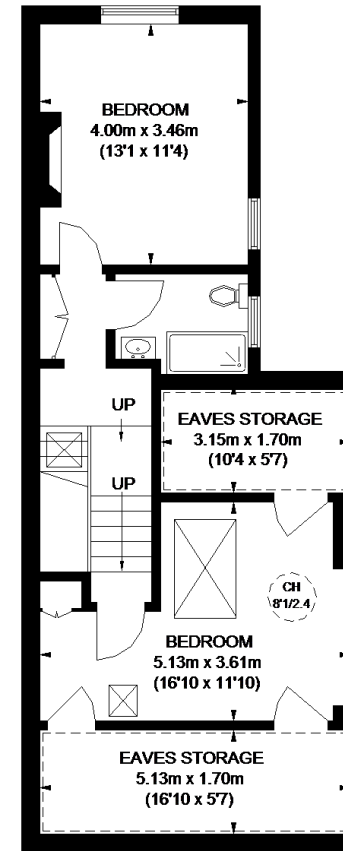
CELLAR



GROUND FLOOR



FIRST FLOOR



SECOND FLOOR

APPROXIMATE GROSS INTERNAL AREA  
(EXCLUDING REDUCED HEADROOM /  
EAVES STORAGE)  
CELLAR = 91 SQ. FT. (8.5 SQ. M.)  
GROUND FLOOR = 731 SQ. FT. (67.9 SQ. M.)  
FIRST FLOOR = 638 SQ. FT. (59.3 SQ. M.)  
SECOND FLOOR = 479 SQ. FT. (44.5 SQ. M.)  
REDUCED HEADROOM / EAVES STORAGE  
152 SQ. FT. (14.1 SQ. M.)  
TOTAL = 2091 SQ. FT. (194.3 SQ. M.)

- = CEILING HEIGHT
- = SKYLIGHT / ROOF WINDOW
- = REDUCED HEADROOM BELOW 1.5M / 5'0"

This plan is for layout guidance only. Not drawn to scale unless stated. Windows and door openings are approximate. Whilst every care is taken in the preparation of this plan, please check all dimensions, shapes and compass bearings before making any decisions reliant upon them. Please be advised that Countrywide / our agents have not seen or reviewed any building regulations or planning permission in relation to works carried out to the property (ID416833)