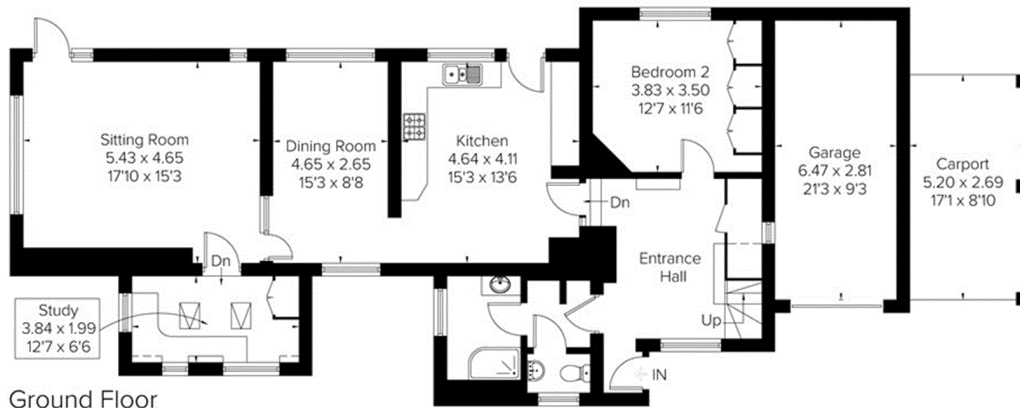
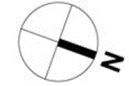
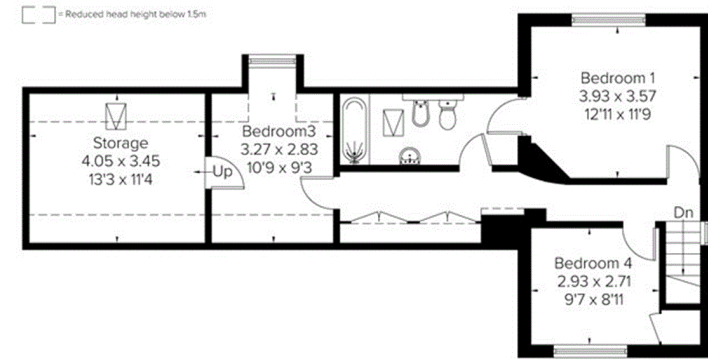


Approximate Area = 179.1 sq m / 1928 sq ft  
Garage = 18.1 sq m / 195 sq ft  
Total = 197.2 sq m / 2123 sq ft (Excluding Carport)  
Including Limited Use Area (11.4 sq m / 122 sq ft)



**Ground Floor**  
Area = 109.9 sq m / 1183 sq ft  
(Limited Use Area = 1.6 sq m / 17 sq ft)



**First Floor**  
Area = 69.2 sq m / 745 sq ft  
(Limited Use Area = 9.8 sq m / 105 sq ft)