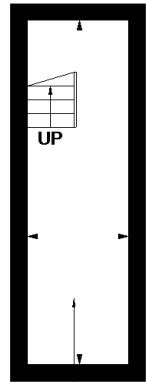
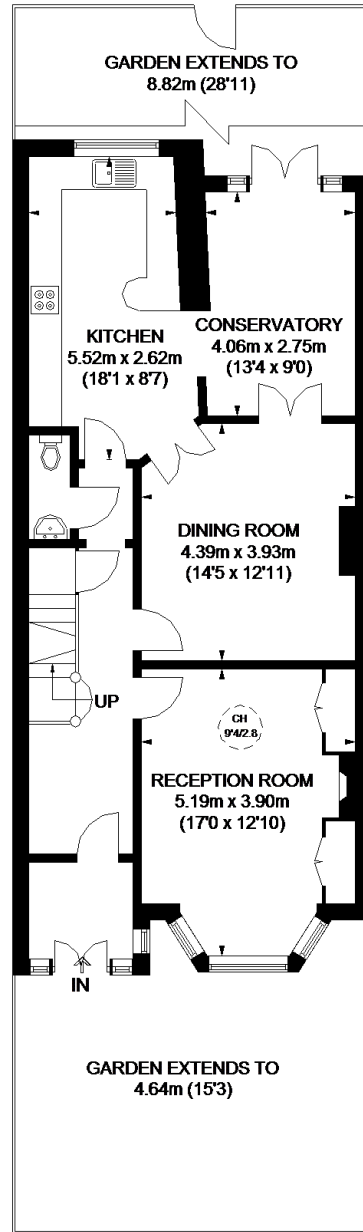


HOTHAM ROAD

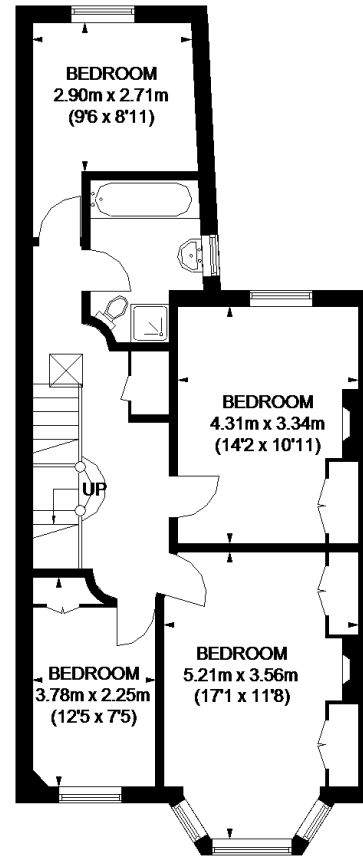


6.26m x 1.86m
(20'6" x 6'1")

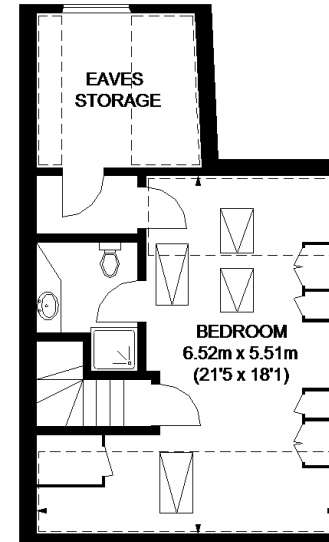
BASEMENT



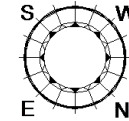
GROUND FLOOR



FIRST FLOOR






SECOND FLOOR



**APPROXIMATE GROSS INTERNAL AREA
(EXCLUDING REDUCED HEADROOM /
EAVES STORAGE)**

BASEMENT = 125 SQ. FT. (11.6 SQ. M.)
 GROUND FLOOR = 890 SQ. FT. (82.7 SQ. M.)
 FIRST FLOOR = 746 SQ. FT. (69.3 SQ. M.)
 SECOND FLOOR = 285 SQ. FT. (26.5 SQ. M.)
 REDUCED HEADROOM / EAVES STORAGE
 194 SQ. FT. (18 SQ. M.)
TOTAL = 2240 SQ. FT. (208.1 SQ. M.)

-  = CEILING HEIGHT
-  = SKYLIGHT / ROOF WINDOW
-  = REDUCED HEADROOM BELOW 1.5M / 5'0"

This plan is for layout guidance only. Not drawn to scale unless stated. Windows and door openings are approximate. Whilst every care is taken in the preparation of this plan, please check all dimensions, shapes and compass bearings before making any decisions reliant upon them. Please be advised that Countrywide / our agents have not seen or reviewed any building regulations or planning permission in relation to works carried out to the property (ID554870)