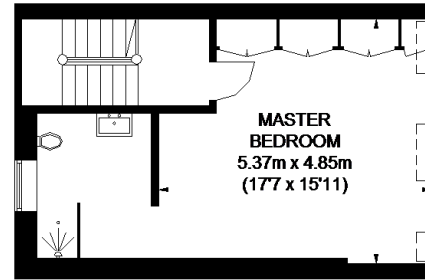
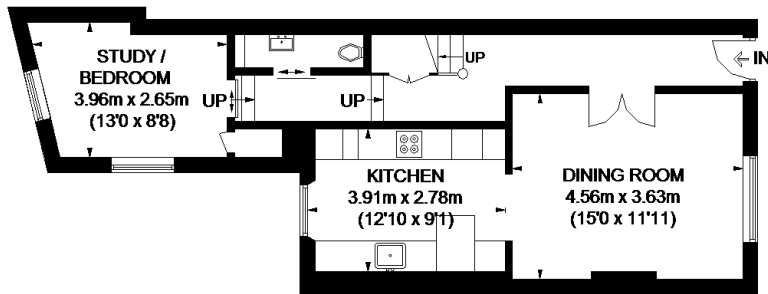


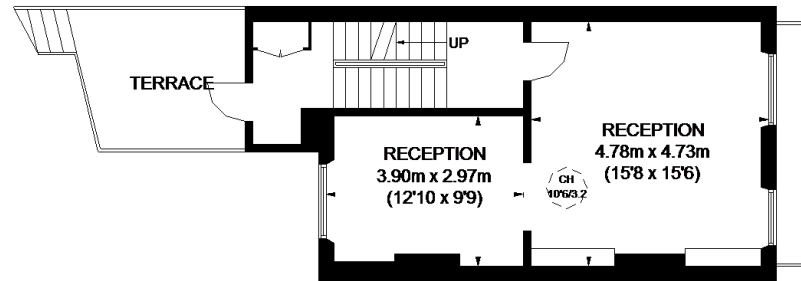
SECOND FLOOR



THIRD FLOOR



GROUND FLOOR

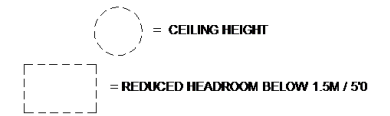


FIRST FLOOR

MORETON TERRACE



APPROXIMATE GROSS INTERNAL AREA
(EXCLUDING REDUCED HEADROOM)
 GROUND FLOOR = 577 SQ. FT. (53.6 SQ. M.)
 FIRST FLOOR = 484 SQ. FT. (45.0 SQ. M.)
 SECOND FLOOR = 458 SQ. FT. (42.6 SQ. M.)
 THIRD FLOOR = 399 SQ. FT. (37.1 SQ. M.)
 REDUCED HEADROOM
 9 SQ. FT. (0.8 SQ. M.)
 TOTAL = 1927 SQ. FT. (179.1 SQ. M.)



This plan is for layout guidance only. Not drawn to scale unless stated. Windows and door openings are approximate. Whilst every care is taken in the preparation of this plan, please check all dimensions, shapes and compass bearings before making any decisions reliant upon them. Please be advised that Countrywide / our agents have not seen or reviewed any building regulations or planning permission in relation to works carried out to the property (ID572552)