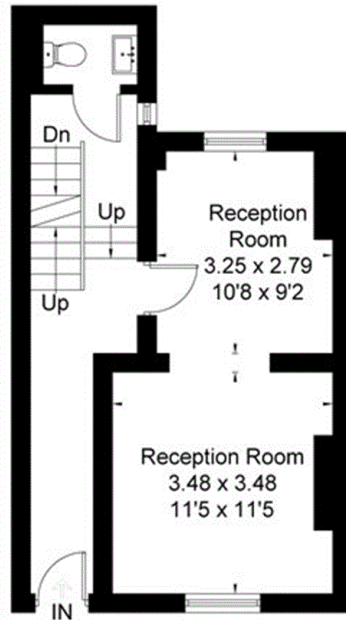
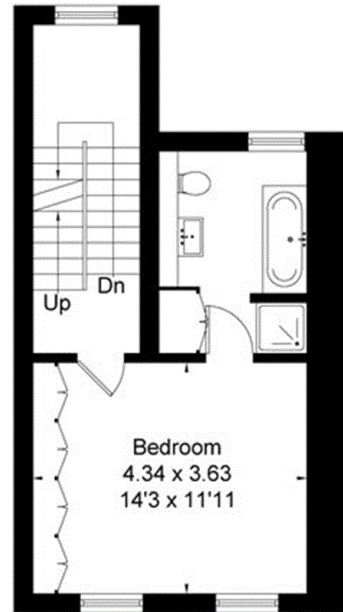


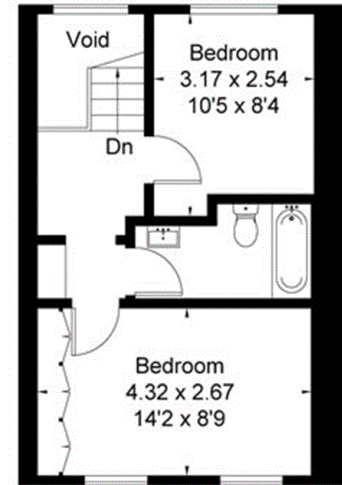
Basement



Ground Floor



First Floor



Second Floor



Approximate Area
 Basement = 43.5 sq m / 468 sq ft
 Ground Floor = 36.9 sq m / 397 sq ft
 First Floor = 33.9 sq m / 365 sq ft
 Second Floor = 29.6 sq m / 319 sq ft
 Vaults = 6.5 sq m / 70 sq ft
 Total = 150.4 sq m / 1619 sq ft
 (Excluding Void)
 Including Limited Use Area
 (0.9 sq m / 10 sq ft)

Surveyed and drawn in accordance
 with the International Property
 Measurement Standards
 (IPMS 2: Residential)
 fourwalls-group.com 242494