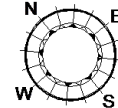
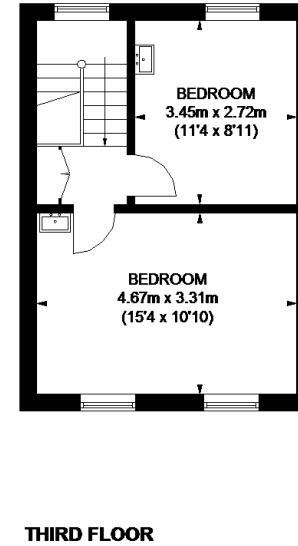
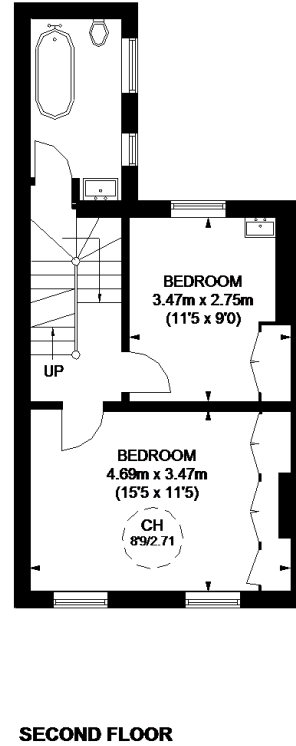
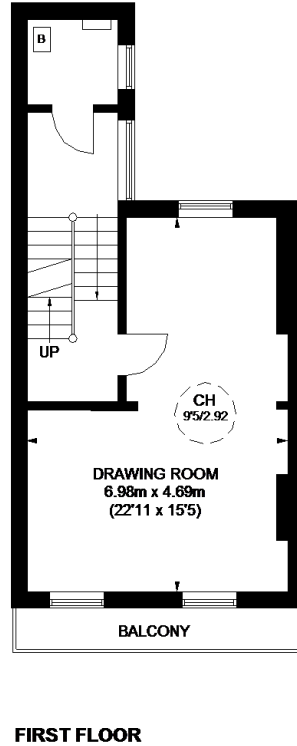
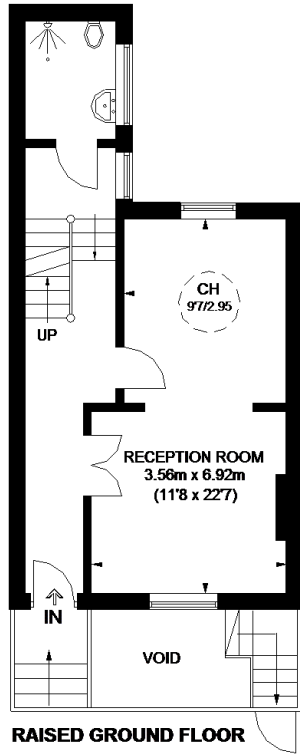
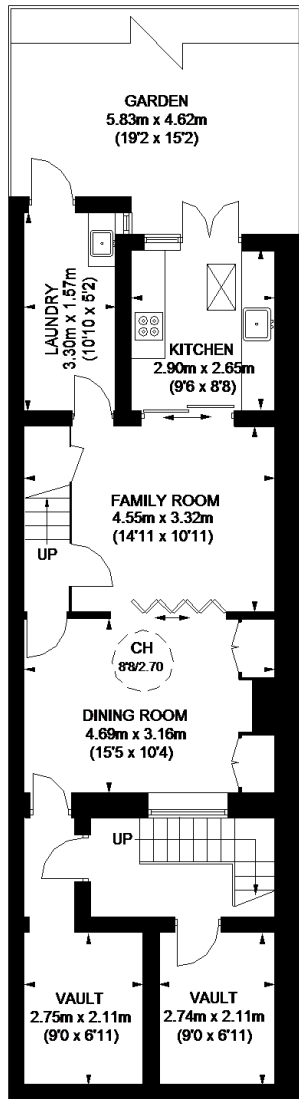


# CAMBRIDGE STREET



APPROXIMATE GROSS INTERNAL AREA  
 LOWER GROUND FLOOR = 515 SQ. FT. (47.9 SQ. M.)  
 RAISED GROUND FLOOR = 413 SQ. FT. (38.4 SQ. M.)  
 FIRST FLOOR = 413 SQ. FT. (38.4 SQ. M.)  
 SECOND FLOOR = 413 SQ. FT. (38.4 SQ. M.)  
 THIRD FLOOR = 348 SQ. FT. (32.3 SQ. M.)  
 VAULTS = 138 SQ. FT. (12.8 SQ. M.)  
 TOTAL = 2240 SQ. FT. (208.2 SQ. M.)



This plan is for layout guidance only. Not drawn to scale unless stated. Windows and door openings are approximate. Whilst every care is taken in the preparation of this plan, please check all dimensions, shapes and compass bearings before making any decisions reliant upon them. Please be advised that Countrywide / our agents have not seen or reviewed any building regulations or planning permission in relation to works carried out to the property (ID475373)