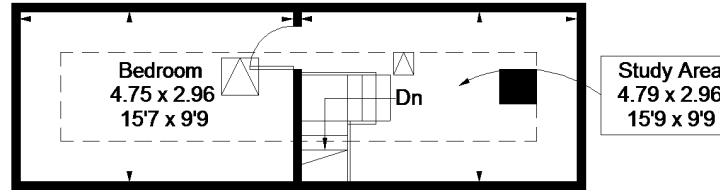
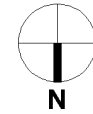


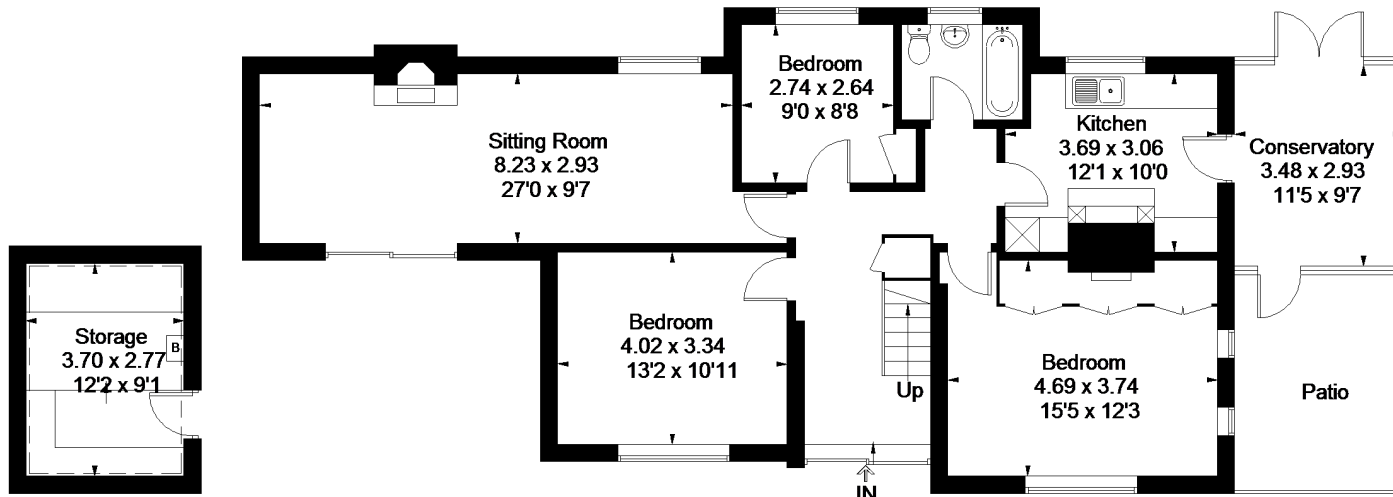
Approximate Floor Area = 146.5 sq m / 1577 sq ft  
 Including Limited Use Area (26.0 sq m / 280 sq ft)  
 Garage = 15.3 sq m / 165 sq ft  
 Total = 161.8 sq m / 1742 sq ft



**First Floor**

Area = 28.6 sq m / 308 sq ft  
 (Limited Use Area = 15.8 sq m / 170 sq ft)

= Reduced head height below 1.5m

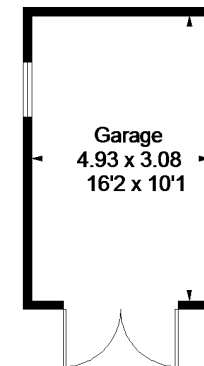


**Storage (Under Patio)**

Area = 10.2 sq m / 110 sq ft  
 (Limited Use Area = 10.2 sq m / 110 sq ft)

**Ground Floor**

Area = 107.7 sq m / 1159 sq ft



Area = 15.3 sq m / 165 sq ft