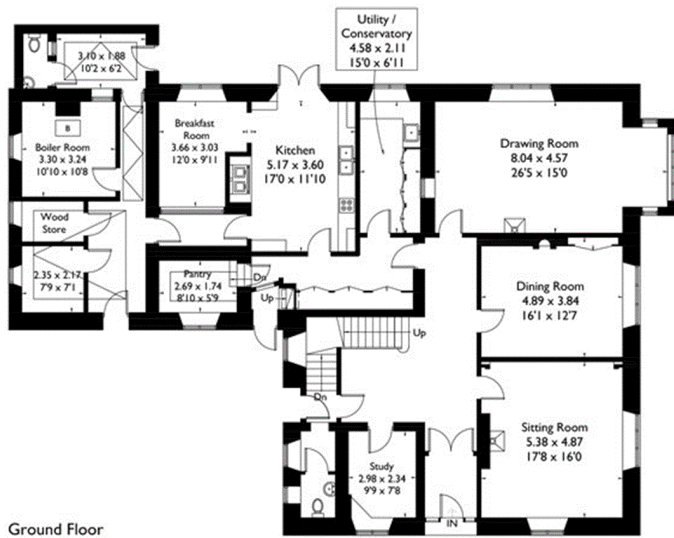
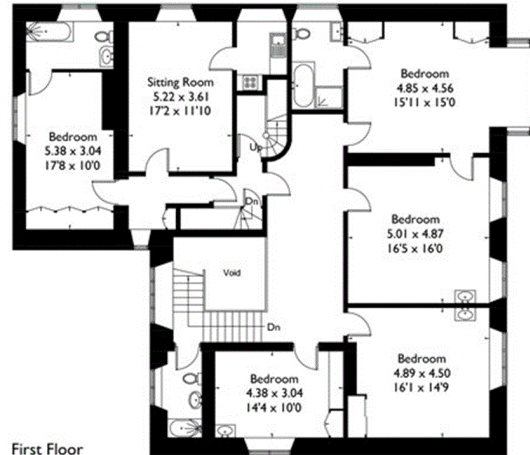


Approximate Gross Internal Area  
 House = 549.3 sq m / 5913 sq ft (Excluding Void)  
 Cellar = 76.9 sq m / 828 sq ft  
 Garage = 34.1 sq m / 367 sq ft  
 Outbuilding = 14.6 sq m / 157 sq ft  
 Total = 674.9 sq m / 7265 sq ft

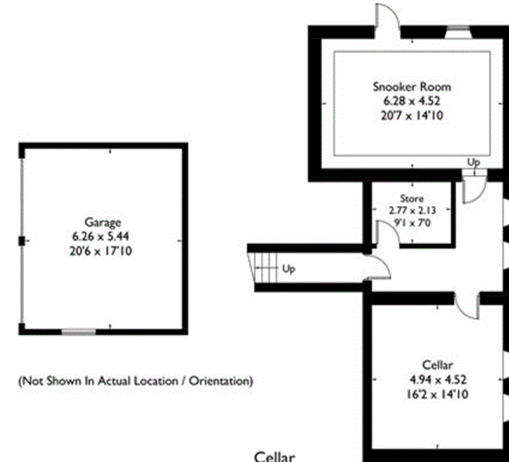
= Reduced headroom below 1.5m / 5'0"



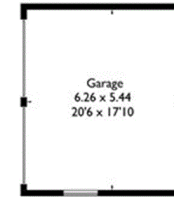
Ground Floor



First Floor



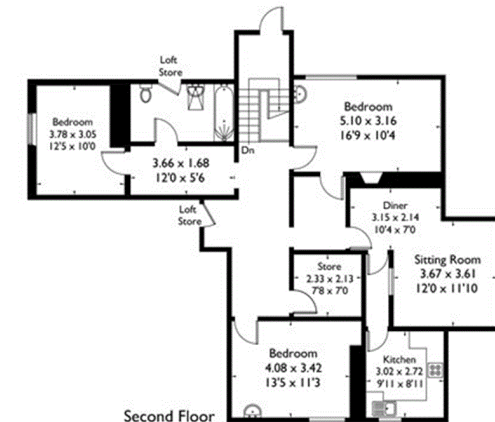
Cellar



(Not Shown In Actual Location / Orientation)



(Not Shown In Actual Location / Orientation)



Second Floor

FLOORPLANZ © 2017 0203 9056099 Ref: 197057

This plan is for layout guidance only. Drawn in accordance with RICS guidelines. Not drawn to scale unless stated. Windows & door openings are approximate. Whilst every care is taken in the preparation of this plan, please check all dimensions, shapes & compass bearings before making any decisions reliant upon them.