

Church Road, Weston-on-the-Green, Bicester

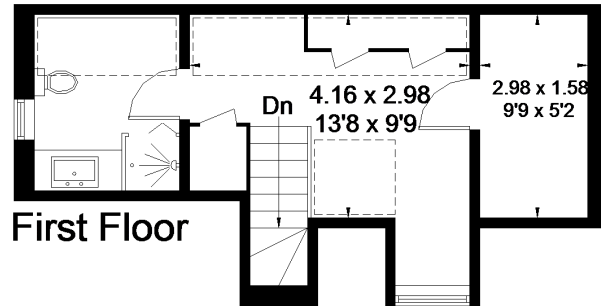
Approximate Gross Internal Area = 167.1 sq m / 1798 sq ft

Garage & Gym = 16.6 sq m / 178 sq ft

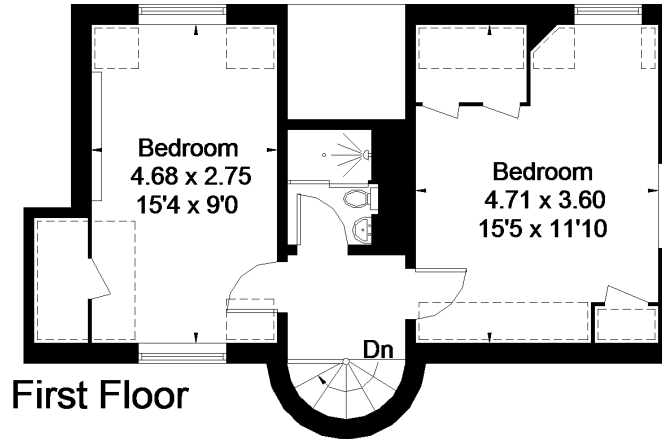
Total = 183.7 sq m / 1977 sq ft



= Reduced headroom below 1.5m / 5'0

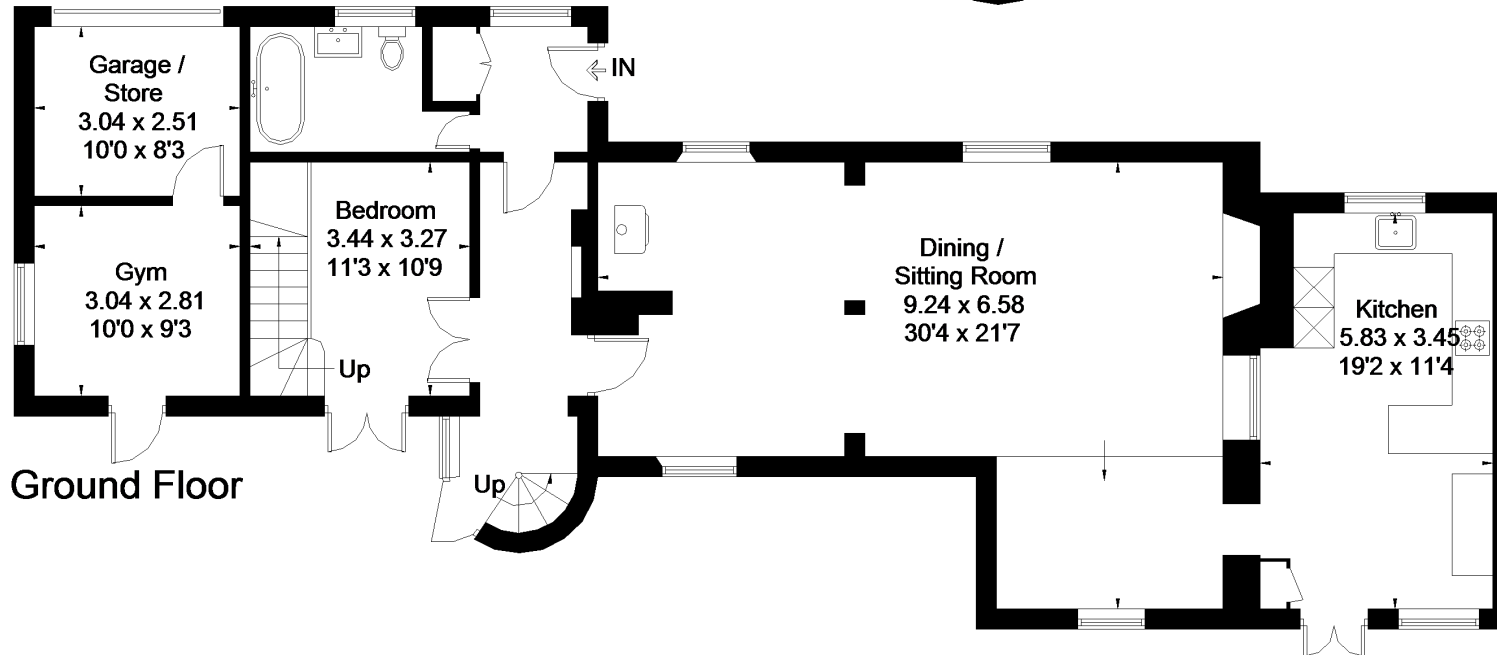


First Floor



First Floor

Floorplanz © 2018
0203 9056099 Ref: ??????
This plan is for layout guidance only.
Drawn in accordance with
RICS guidelines. Not drawn to
scale, unless stated. Windows &
door openings are approximate.
Whilst every care is taken in the
preparation of this plan, please check
all dimensions, shapes & compass
bearings before making any
decisions reliant upon them.



Ground Floor