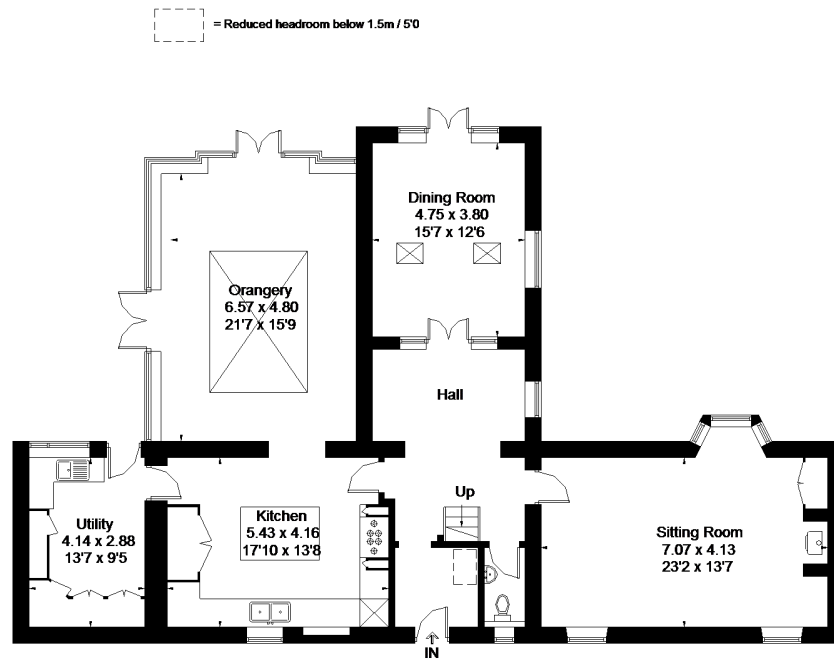
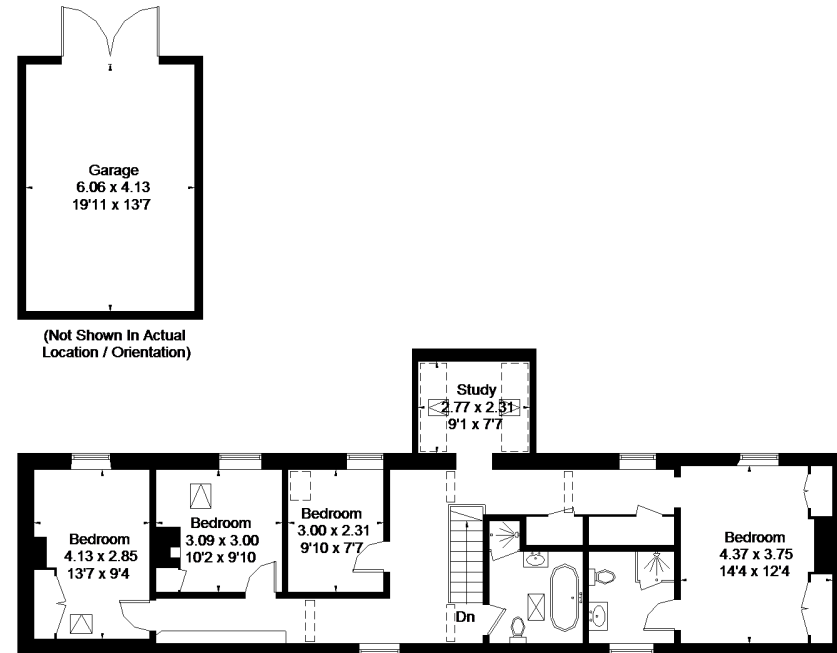


High Street, Aston, Bampton

Approximate Gross Internal Area = 240.6 sq m / 2590 sq ft
Garage = 25.1 sq m / 270 sq ft
Total = 265.7 sq m / 2860 sq ft



Ground Floor



First Floor

FLOORPLANZ © 2018 0203 9056099 Ref: 220527

This plan is for layout guidance only. Drawn in accordance with RICS guidelines. Not drawn to scale unless stated. Windows & door openings are approximate. Whilst every care is taken in the preparation of this plan, please check all dimensions, shapes & compass bearings before making any decisions reliant upon them.