

Apartment Data Sheet
 
 East BUCKINGHAM HOUSE

**Flat 3**  
 (1bed/1bath)  
 - First Floor

**OUTLINE SPECIFICATION**

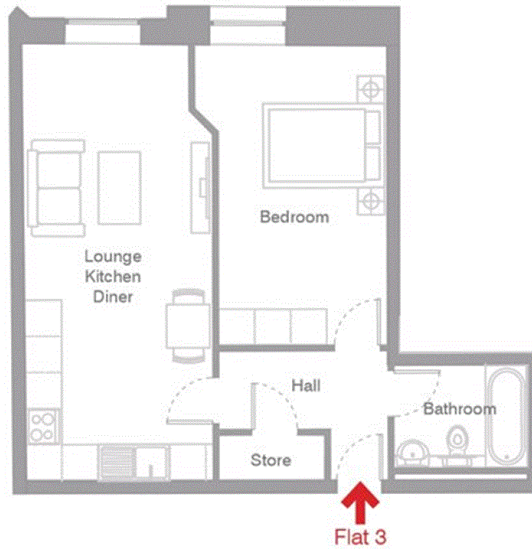
- Thermally and acoustically efficient double glazed windows
- Television (terrestrial and Satellite) points to all flats
- High efficiency (SEDBUK) rated grade 'A' gas central heating and hot water system
- Telephone points in all flats
- LED spotlights throughout
- Bespoke built-in wardrobe to bedrooms
- Carpet to bedrooms
- Laminate wood flooring to hallway and living area
- Video entry system
- Lift
- All flats covered with professional warranty

**KITCHEN**

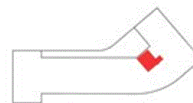
- Quartz worktops, upstand and splashback
- with stainless steel bowls/ drainers and mixer tap
- Super matt door finishes
- Integrated Siemens appliances
- Fridge/Freezer
- Dishwasher
- Multi-function electric oven
- Gas hob
- Kitchen extractor with integrated lighting
- Washer dryer

**BATHROOM**

- Contemporary bathrooms with white sanitaryware
- Porcelain wall and floor tiles
- Stainless steel/chrome finished heated towel rails
- White vitrified enamel wall mounted WC with soft close seat and dual push button flush
- Mechanical extract ventilation
- Thermostatic mixer shower
- Designer taps and accessories



Lounge/Kitchen/Diner	7.2m x 3.0m	23'7" x 9'10"
Bedroom	5.2m x 3.2m	17'0" x 10'5"
Bathroom	1.7m x 2.2m	5'6" x 7'2"



\*dimensions denote maximum lengths for irregular rooms.

Flat 3	1 bed 1 bathroom	48 msq / 516 sq ft
--------	------------------	--------------------