

Apartment Data Sheet

East

B
BUCKINGHAM
HOUSE

Flat 28
(2bed/2bath)
- Third Floor

OUTLINE SPECIFICATION

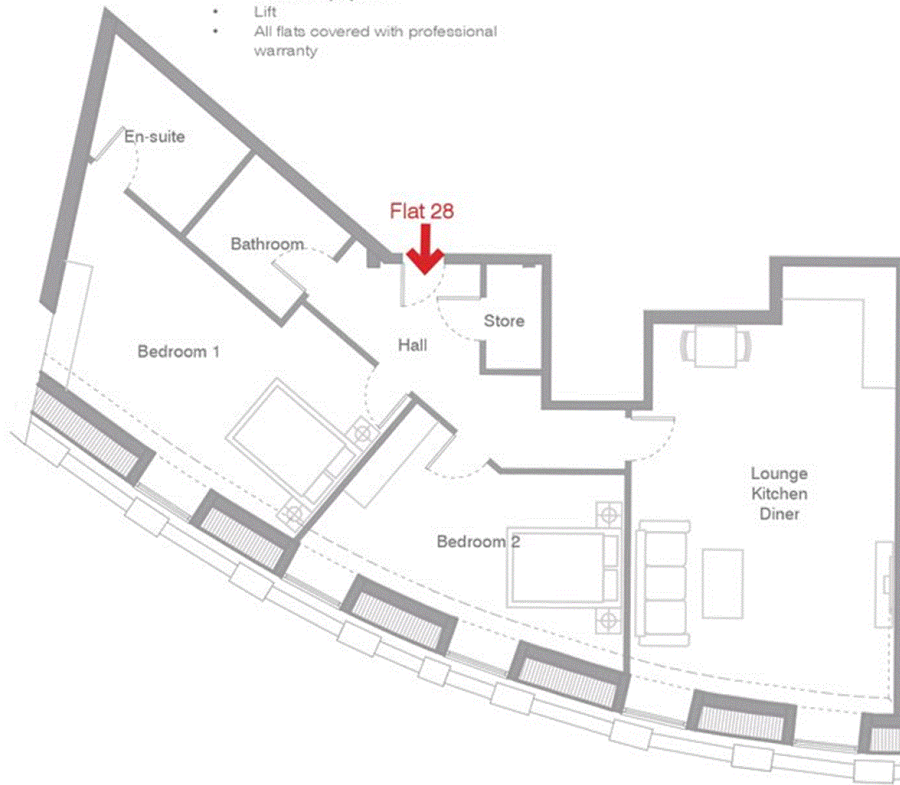
- Thermally and acoustically efficient double glazed windows
- Television (terrestrial and Satellite) points to all flats
- High efficiency (SEDBUK) rated grade 'A' gas central heating and hot water system
- Telephone points in all flats
- LED spotlights throughout
- Bespoke built-in wardrobe to bedrooms
- Carpet to bedrooms
- Laminate wood flooring to hallway and living area
- Video entry system
- Lift
- All flats covered with professional warranty

KITCHEN

- Quartz worktops, upstand and splashback
- with stainless steel bowls/ drainers and mixer tap
- Super matt door finishes
- Integrated Siemens appliances
- Fridge/Freezer
- Dishwasher
- Multi-function electric oven
- Gas hob
- Kitchen extractor with integrated lighting
- Washer dryer

BATHROOM

- Contemporary bathrooms with white sanitaryware
- Porcelain wall and floor tiles
- Stainless steel/chrome finished heated towel rails
- White vitrified enamel wall mounted WC with soft close seat and dual push button flush
- Mechanical extract ventilation
- Thermostatic mixer shower
- Designer taps and accessories



Lounge/Kitchen/Diner	4.6m x 7.8m	15'1" x 25'7"
Bedroom 1	3.3m x 3.4m	10'9" x 11'1"
Bedroom 2	4.4m x 3.0m	14'5" x 9'10"
Bedroom 3	3.1m x 4.1m	10'2" x 13'5"
Bathroom	2.9m x 2.5m	9'6" x 8'2"
En-suite	2.1m x 1.2m	6'10" x 3'11"

*dimensions denote maximum lengths for irregular rooms.



Flat 28	2 bed 2 bathroom	97 msq / 1,044 sq ft
---------	------------------	----------------------



NB. In the interest of continuous improvements and design development, specifications may be subject to variation. All information corrected at time of printing (25.09.18).

