

Apartment Data Sheet

East

B
BUCKINGHAM
HOUSE

Flat 25
(2bed/2bath)
- Third Floor

OUTLINE SPECIFICATION

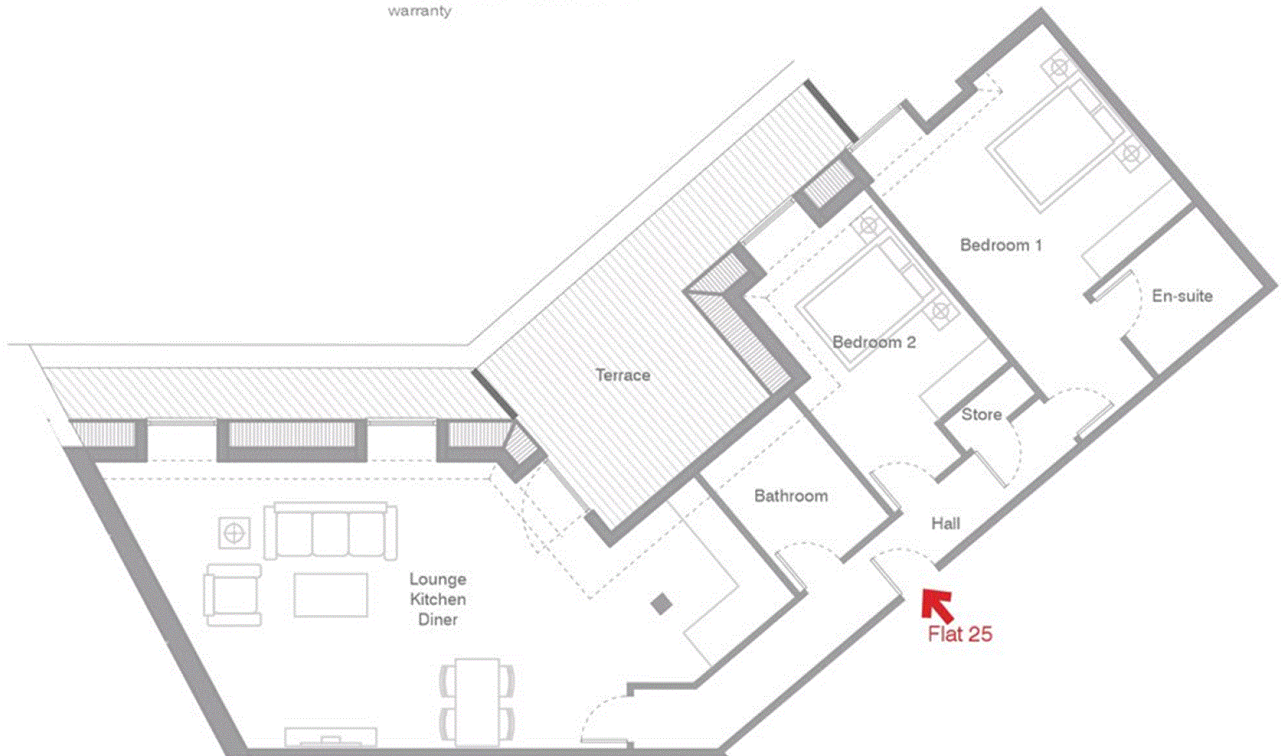
- Thermally and acoustically efficient double glazed windows
- Television (terrestrial and Satellite) points to all flats
- High efficiency (SEDBUK) rated grade 'A' gas central heating and hot water system
- Telephone points in all flats
- LED spotlights throughout
- Bespoke built-in wardrobe to bedrooms
- Carpet to bedrooms
- Laminate wood flooring to hallway and living area
- Video entry system
- Lift
- All flats covered with professional warranty

KITCHEN

- Quartz worktops, upstand and splashback
- with stainless steel bowls/ drainers and mixer tap
- Super matt door finishes
- Integrated Siemens appliances
- Fridge/Freezer
- Dishwasher
- Multi-function electric oven
- Gas hob
- Kitchen extractor with integrated lighting
- Washer dryer

BATHROOM

- Contemporary bathrooms with white sanitaryware
- Porcelain wall and floor tiles
- Stainless steel/chrome finished heated towel rails
- White vitrified enamel wall mounted WC with soft close seat and dual push button flush
- Mechanical extract ventilation
- Thermostatic mixer shower
- Designer taps and accessories



Lounge/Kitchen/Diner	6.8m x 4.6m	22'3" x 15'1"
Bedroom 1	5.4m x 3.0m	17'8" x 9'10"
Bedroom 2	4.0m x 3.0m	13'1" x 9'10"
Bathroom	2.5m x 1.9m	8'2" x 6'2"
En-suite	1.2m x 2.1m	3'11" x 6'10"

*dimensions denote maximum lengths for irregular rooms.



Flat 25	2 bed 2 bathroom	95 msq / 1,022 sq ft
---------	------------------	----------------------



NB. In the interest of continuous improvements and design development, specifications may be subject to variation. All information corrected at time of printing (25.09.18).

