

Apartment Data Sheet

East

B
BUCKINGHAM
HOUSE

Flat 23 (1bed/1bath) - Second Floor

OUTLINE SPECIFICATION

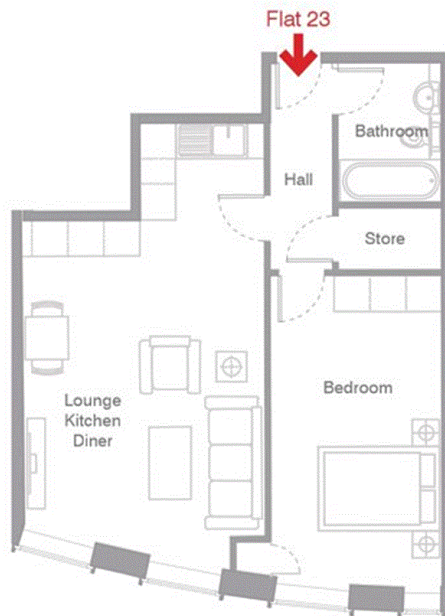
- Thermally and acoustically efficient double glazed windows
- Television (terrestrial and Satellite) points to all flats
- High efficiency (SEDBUK) rated grade 'A' gas central heating and hot water system
- Telephone points in all flats
- LED spotlights throughout
- Bespoke built-in wardrobe to bedrooms
- Carpet to bedrooms
- Laminate wood flooring to hallway and living area
- Video entry system
- Lift
- All flats covered with professional warranty

KITCHEN

- Quartz worktops, upstand and splashback
- with stainless steel bowls/drainers and mixer tap
- Super matt door finishes
- Integrated Siemens appliances
- Fridge/Freezer
- Dishwasher
- Multi-function electric oven
- Gas hob
- Kitchen extractor with integrated lighting
- Washer dryer

BATHROOM

- Contemporary bathrooms with white sanitaryware
- Porcelain wall and floor tiles
- Stainless steel/chrome finished heated towel rails
- White vitrified enamel wall mounted WC with soft close seat and dual push button flush
- Mechanical extract ventilation
- Thermostatic mixer shower
- Designer taps and accessories



Lounge/Kitchen/Diner	7.1m x 4.0m	23'3" x 13'1"
Bedroom	2.8m x 5.0m	9'2" x 16'4"
Bathroom	1.7m x 2.2m	5'6" x 7'2"



*dimensions denote maximum lengths for irregular rooms.

Flat 23	1 bed 1 bathroom	52 msq / 560 sq ft
---------	------------------	--------------------



NB. In the interest of continuous improvements and design development, specifications may be subject to variation. All information corrected at time of printing (25.09.18).

