
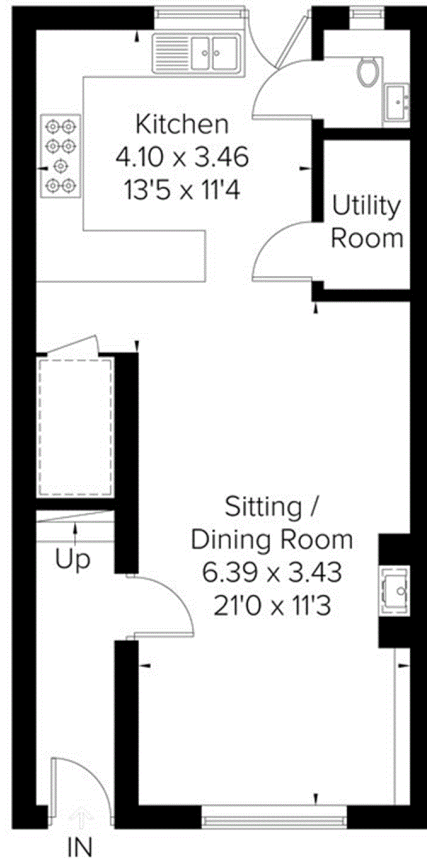


George Street Kingsclere, Newbury

Approximate Gross Internal Area = 93.8 sq m / 1010 sq ft

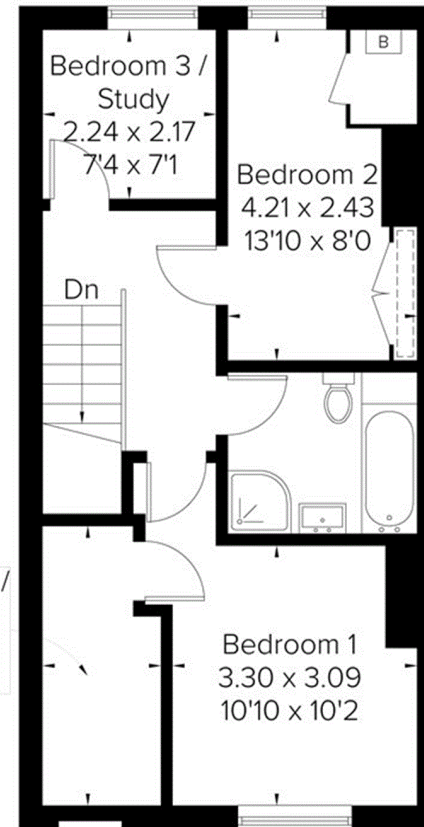


 = Reduced headroom below 1.5m / 5'0



Ground Floor

Walk In Wardrobe /
Dressing Room
3.57 x 1.53
11'9 x 5'0



First Floor

FLOORPLANZ © 2018 0203 9056099 Ref: 224318

This plan is for layout guidance only. Drawn in accordance with RICS guidelines. Not drawn to scale unless stated. Windows & door openings are approximate. Whilst every care is taken in the preparation of this plan, please check all dimensions, shapes & compass bearings before making any decisions reliant upon them.