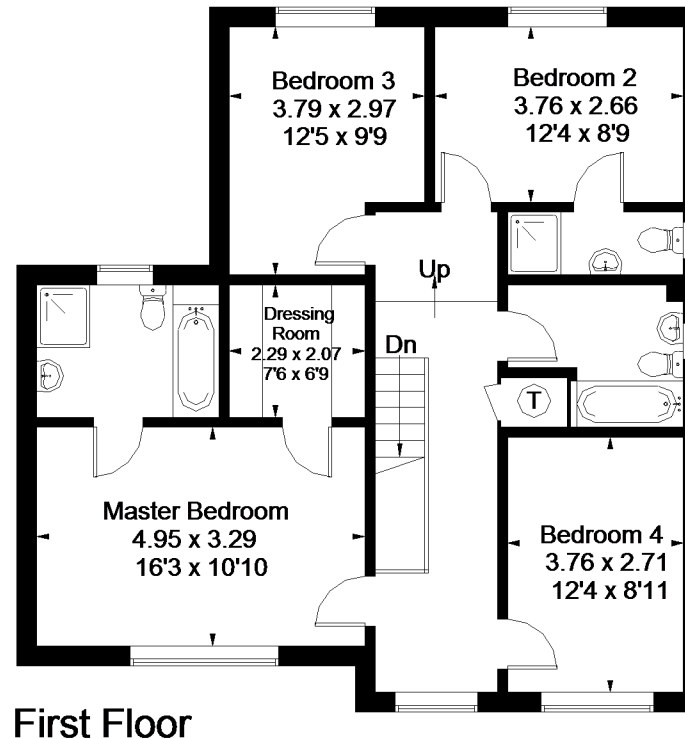
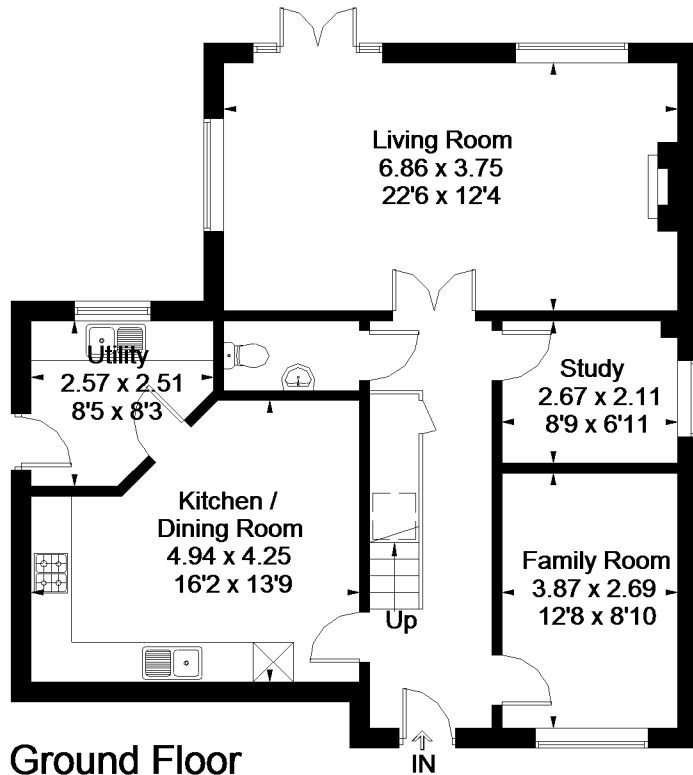
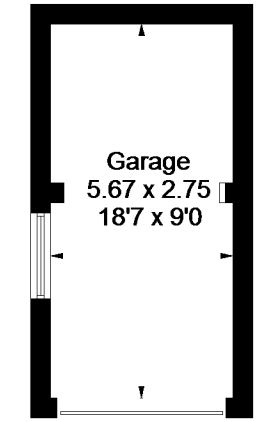


Approximate Floor Area = 169.3 sq m / 1823 sq ft
 Including Limited Use Area (2.8 sq m / 30 sq ft)
 Garage = 15.5 sq m / 167 sq ft
 Total = 184.8 sq m / 1990 sq ft



= Reduced head height below 1.5m



Area = 15.5 sq m / 167 sq ft