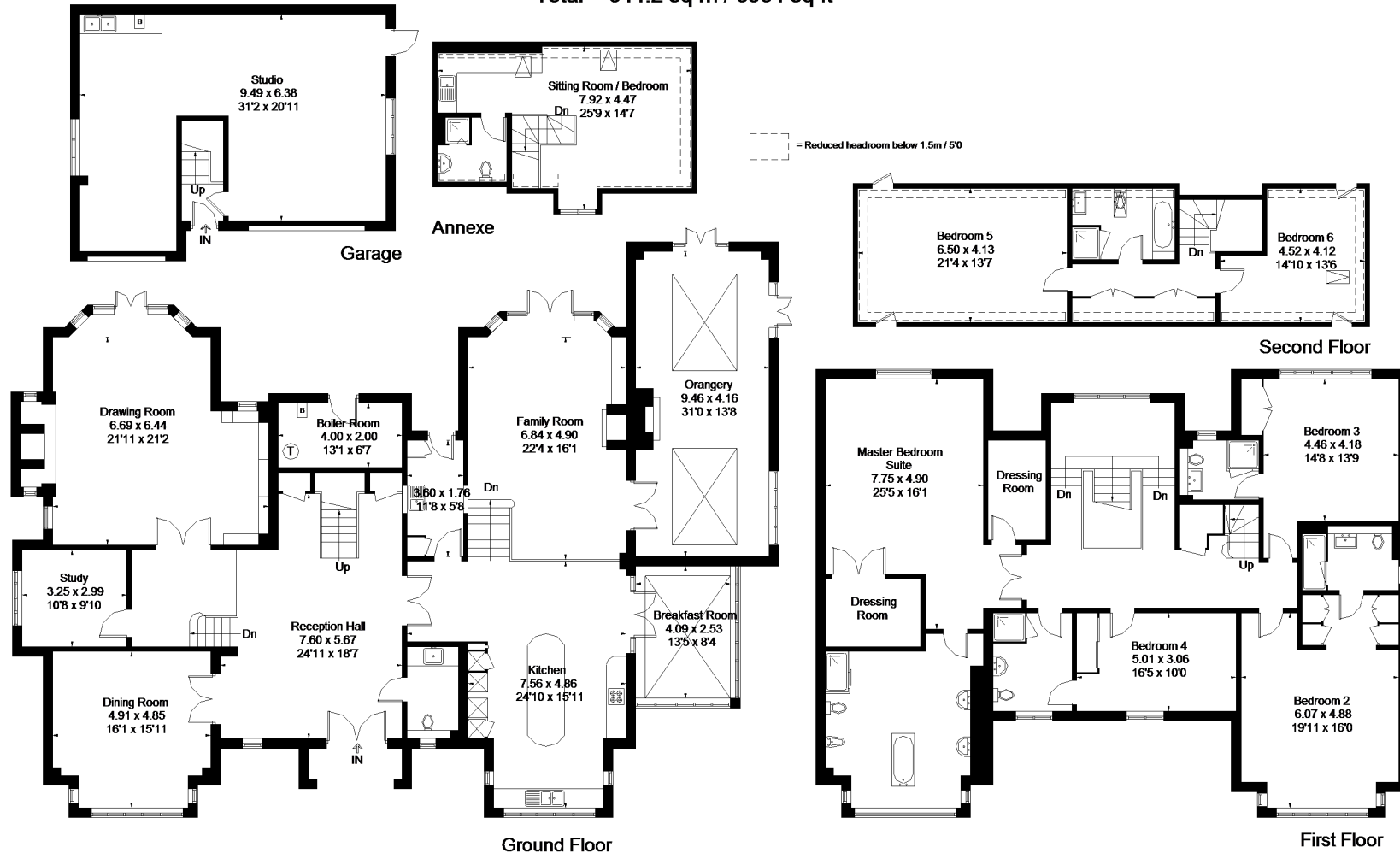


Harvest Hill, Bourne End

Approximate Gross Internal Area
 House = 546.8 sq m / 5886 sq ft
 Annexe = 97.4 sq m / 1048 sq ft
 Total = 644.2 sq m / 6934 sq ft



FLOORPLANZ® 2017 0203 9056099 Ref: 194675

This plan is for layout guidance only. Drawn in accordance with RICS guidelines. Not drawn to scale unless stated. Windows & door openings are approximate. Whilst every care is taken in the preparation of this plan, please check all dimensions, shapes & compass bearings before making any decisions reliant upon them.