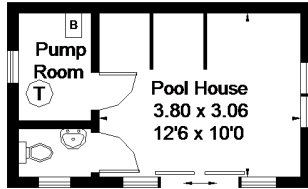
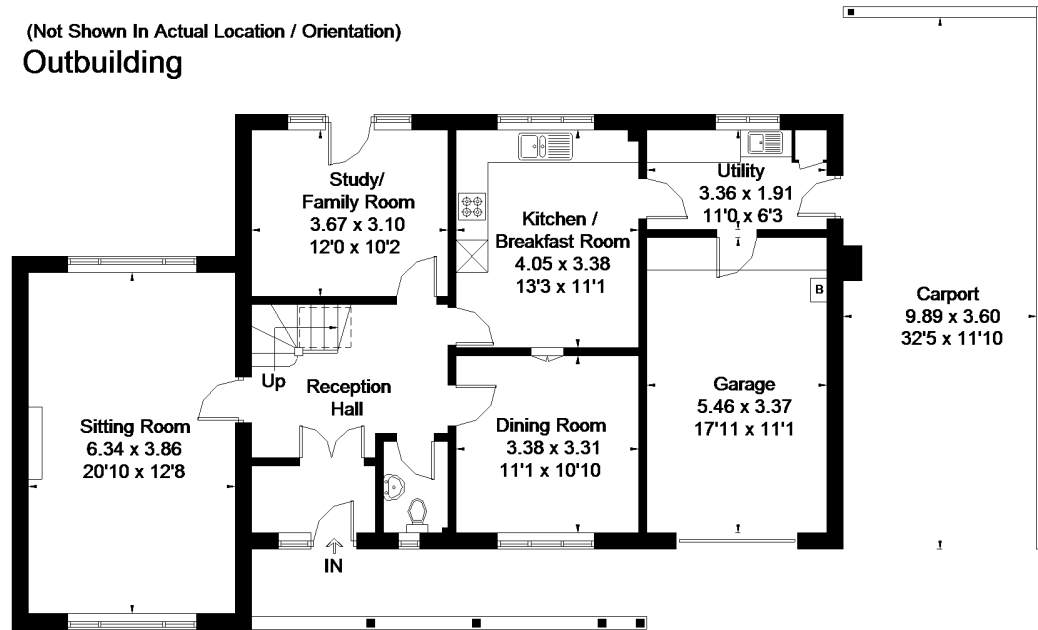


# Highcroft, Wycombe Road, Marlow

Approximate Gross Internal Area = 186.9 sq m / 2012 sq ft  
 Outbuilding = 16 sq m / 172 sq ft  
 Total = 202.9 sq m / 2184 sq ft

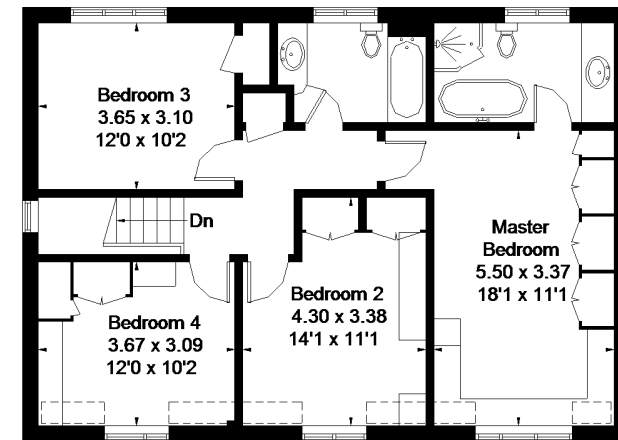


(Not Shown In Actual Location / Orientation)  
**Outbuilding**



**Ground Floor**

= Reduced headroom below 1.5m / 5'0



**First Floor**

FLOORPLANZ © 2017 0203 9056099 Ref: 190413

This plan is for layout guidance only. Drawn in accordance with RICS guidelines. Not drawn to scale unless stated. Windows & door openings are approximate. Whilst every care is taken in the preparation of this plan, please check all dimensions, shapes & compass bearings before making any decisions reliant upon them.