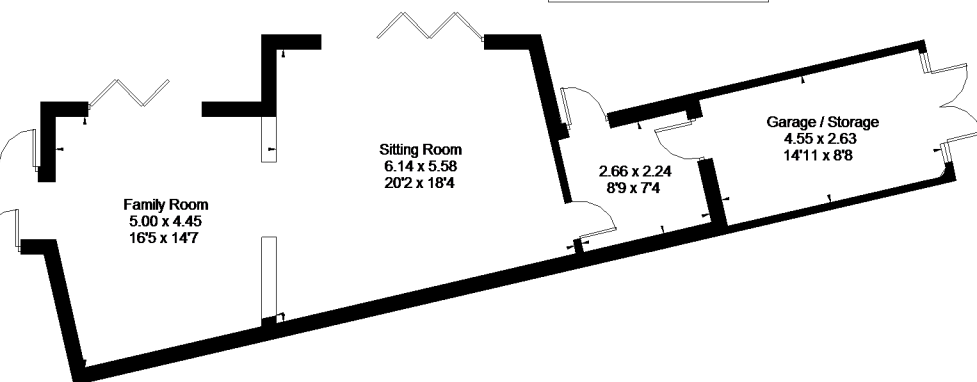
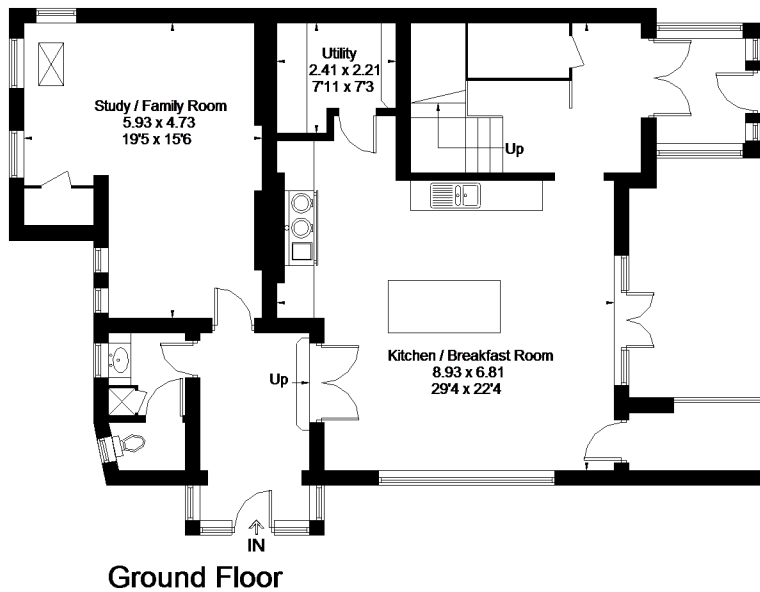
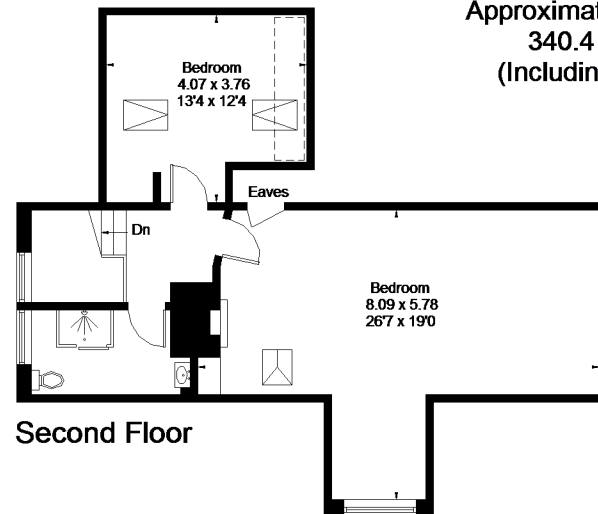
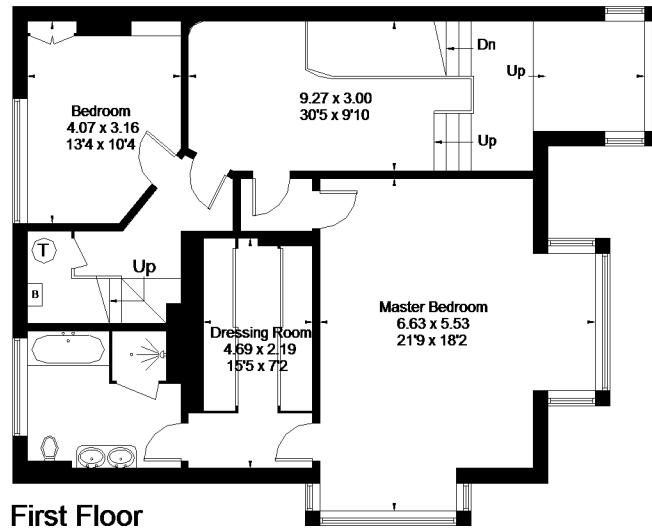


# Mill Road, Marlow

Approximate Gross Internal Area  
340.4 sq m / 3664 sq ft  
(Including Garage / Storage)



- - - - - = Reduced headroom below 1.5m / 5'0"

Floorplanz © 2016  
0845 6344080 Ref: 172424

This plan is for layout guidance only. Drawn in accordance with RICS guidelines. Not drawn to scale, unless stated. Windows & door openings are approximate. Whilst every care is taken in the preparation of this plan, please check all dimensions, shapes & compass bearings before making any decisions reliant upon them.