

Hedsor Road, Bourne End

Approximate Gross Internal Area = 305 sq m / 3283 sq ft

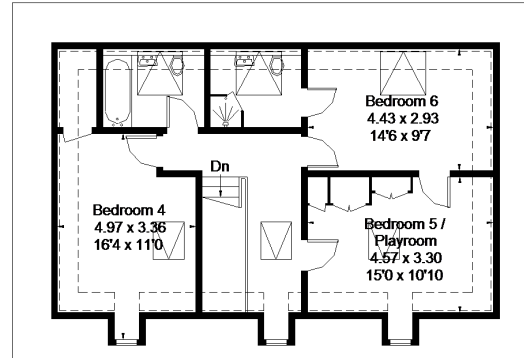
Garage = 25.9 sq m / 279 sq ft

Workshop = 23.9 sq m / 257 sq ft

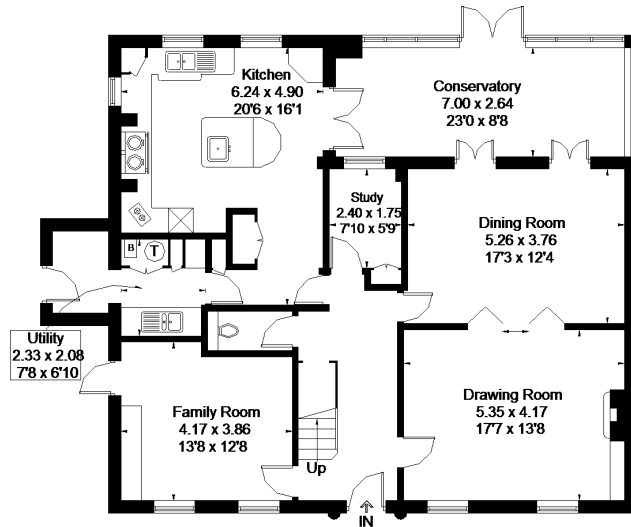
Total = 354.8 sq m / 3819 sq ft



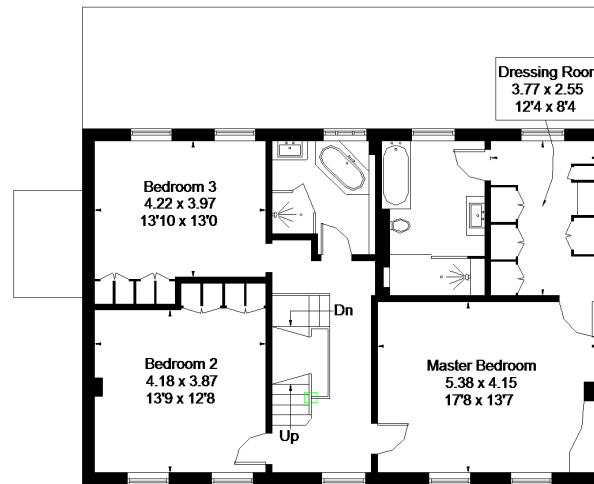
= Reduced headroom below 1.5m / 5'0"



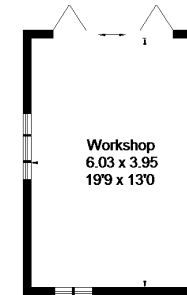
Second Floor



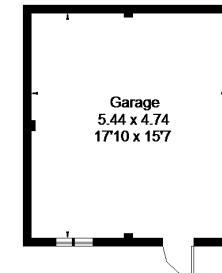
Ground Floor



First Floor



(Not Shown In Actual Location / Orientation)



(Not Shown In Actual Location / Orientation)

FLOORPLANZ © 2017 0203 9056099 Ref: 183447

This plan is for layout guidance only. Drawn in accordance with RICS guidelines. Not drawn to scale unless stated. Windows & door openings are approximate. Whilst every care is taken in the preparation of this plan, please check all dimensions, shapes & compass bearings before making any decisions reliant upon them.