

Widmere Lane, Marlow

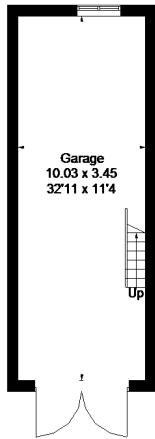
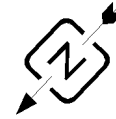
Approximate Gross Internal Area = 317 sq m / 3412 sq ft

(Excluding Voids & Eaves Storage)

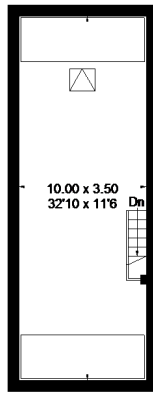
Garage = 69 sq m / 743 sq ft

Store = 9 sq m / 99 sq ft

Total = 395 sq m / 4254 sq ft



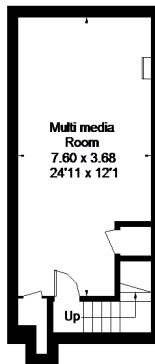
Garage - Ground Floor
(Not Shown In Actual Location/ Orientation)



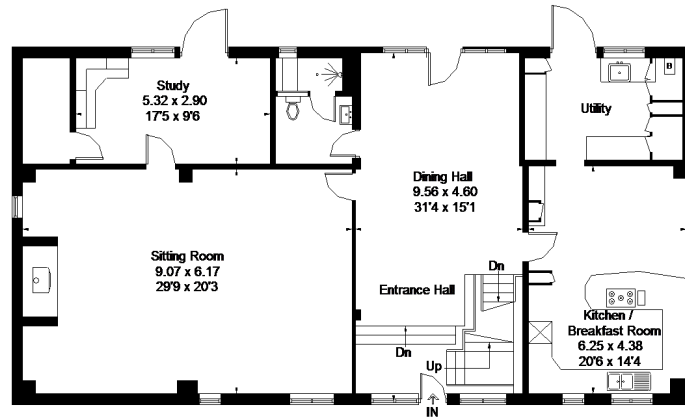
Garage - First Floor



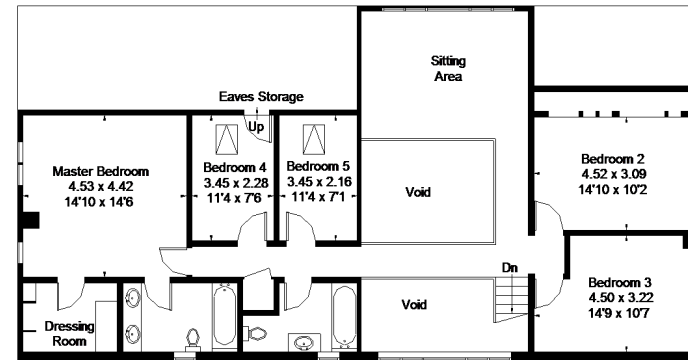
Store
(Not Shown In Actual Location/ Orientation)



Basement



Ground Floor



First Floor

FLOORPLANZ © 2014 0845 6344080 Ref: 137333

This plan is for layout guidance only. Drawn in accordance with RICS guidelines. Not drawn to scale unless stated. Windows & door openings are approximate. Whilst every care is taken in the preparation of this plan, please check all dimensions, shapes & compass bearings before making any decisions reliant upon them.