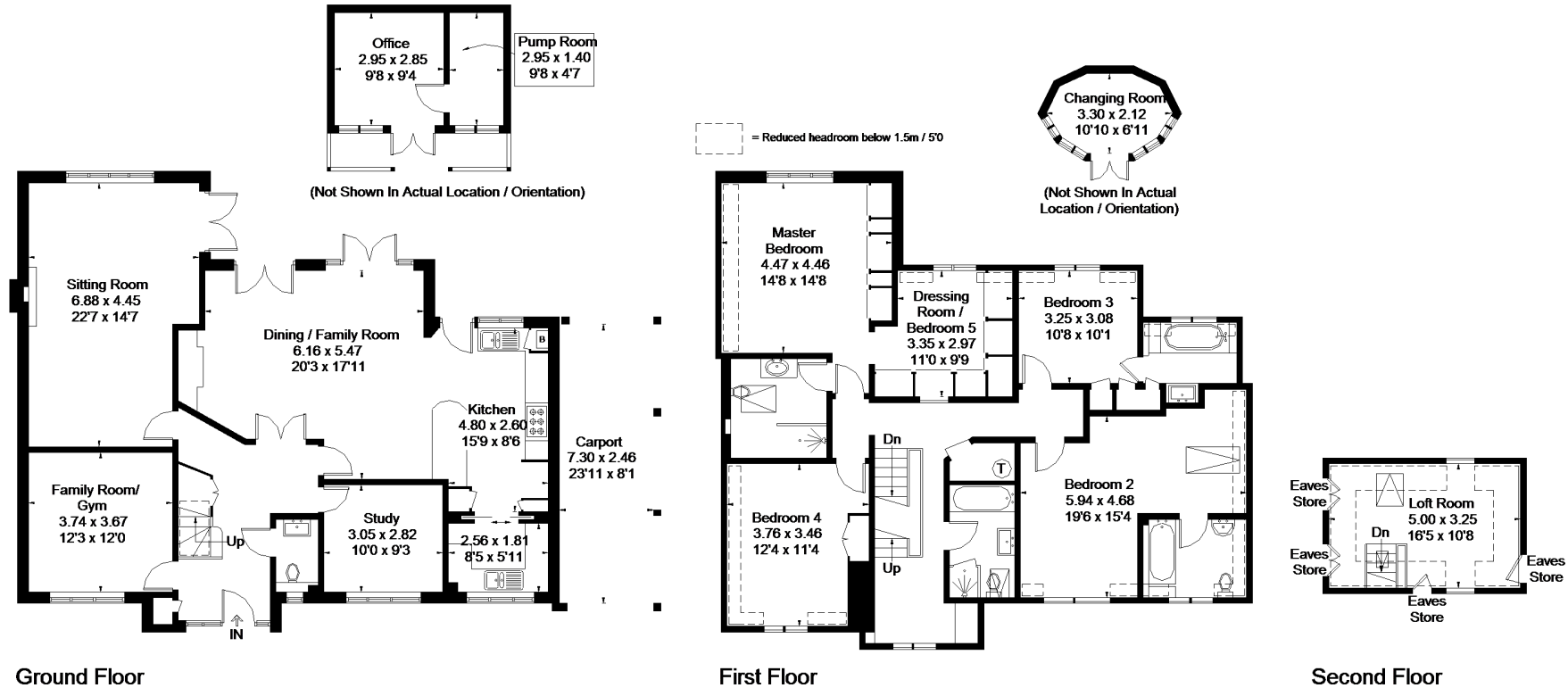


Bisham Road, Marlow

Approximate Gross Internal Area = 266.4 sq m / 2867 sq ft
 Changing Room = 5.3 sq m / 57 sq ft
 Outbuilding = 13 sq m / 140 sq ft
 Total = 284.7 sq m / 3064 sq ft



FLOORPLANZ © 2017 0203 9056099 Ref: 186115

This plan is for layout guidance only. Drawn in accordance with RICS guidelines. Not drawn to scale unless stated. Windows & door openings are approximate. Whilst every care is taken in the preparation of this plan, please check all dimensions, shapes & compass bearings before making any decisions reliant upon them.