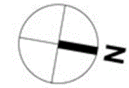
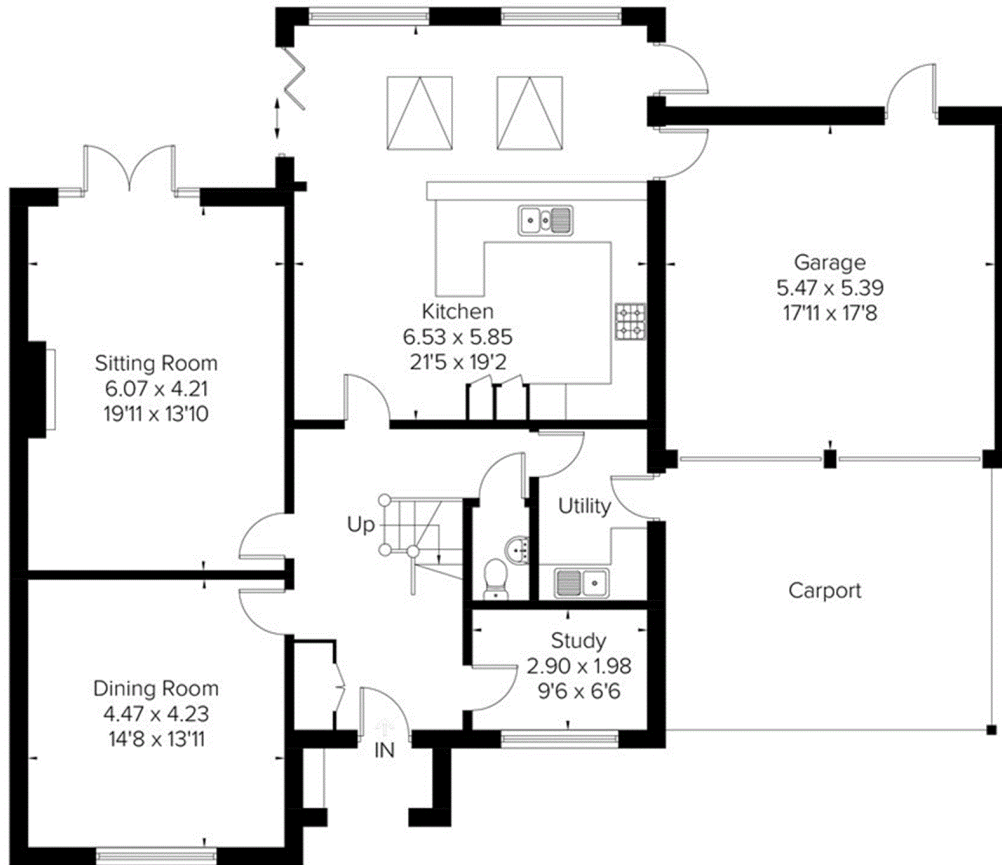


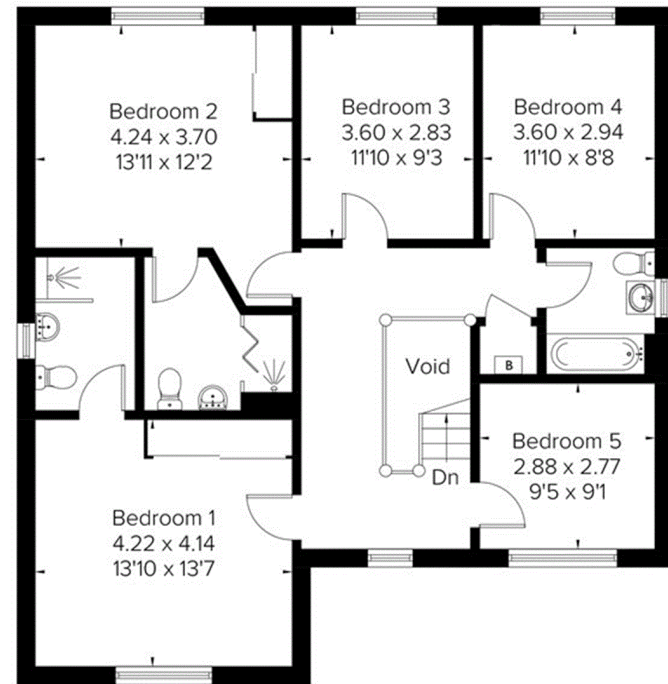
Approximate Floor Area = 210.8 sq m / 2269 sq ft
(Excluding Void)
Garage = 29.5 sq m / 318 sq ft
Total = 240.3 sq m / 2587 sq ft



= Reduced head height below 1.5m



Ground Floor
Area = 115.9 sq m / 1247 sq ft



First Floor
Area = 96.1 sq m / 1034 sq ft
(Excluding Void)